

At this time the Courthouse is open to the public. Anyone wishing to attend will need to call ahead at 913-684-0417 to reserve a seat as the meeting room has limited capacity. All visitors will be required to wear a mask. We are encouraging everyone to continue to view the meeting live via YouTube.

***Leavenworth County***  
***Board of County Commissioners***

***Regular Meeting Agenda***  
300 Walnut Street, Suite 225  
Leavenworth, KS 66048  
December 2, 2020  
9:00 a.m.

- I. CALL TO ORDER
- II. PLEDGE OF ALLEGIANCE/MOMENT OF SILENCE
- III. ROLL CALL
- IV. PUBLIC COMMENT: Public Comment shall be limited to 15 minutes at the beginning of each meeting for agenda items **only** and limited to three minutes per person. Comments at the end of the meeting shall be open to any topic of general interest to the Board of County Commissioners and limited to five minutes per person. There should be no expectation of interaction by the Commission during this time.  
  
Anyone wishing to make comments either on items on the agenda or not are encouraged to provide their comments in writing no later than 8:00 AM the Monday immediately preceding the meeting. These comments will be included in the agenda packet for everyone to access and review. This allows the Commission to have time to fully consider input and request follow up if needed prior to the meeting.
- V. ADMINISTRATIVE BUSINESS:
- VI. CONSENT AGENDA: The items on the Consent Agenda are considered by staff to be routine business items. Approval of the items may be made by a single motion, seconded, and a majority vote with no separate discussion of any item listed. Should a member of the Governing Body desire to discuss any item, it will be removed from the Consent Agenda and considered separately.

- a) Approval of the minutes of November 25, 2020
- b) Approval of the schedule for the week December 7, 2020
- c) Approval of the check register
- d) Approve and sign the OCB's

VII. FORMAL BOARD ACTION:

- a) Consider a motion to approve Resolution 2020-47, a special use permit for James Rutledge's agriculturally related business.
- b) Consider a motion to accept the proposal by ARUP to conduct a feasibility study for the Eastern Gateway Bridge in an amount not to exceed \$100,000.00.
- c) Consider a motion to engage outside legal counsel provided by Ballard and Spahr for the Eastern Gateway Bridge project in an amount not to exceed \$75,000.00.
- d) Consider a motion to approve the change order to the contract agreement for Additional Alternate No. for the stop light at the intersection of 20<sup>th</sup> and Eisenhower.
- e) Consider a motion to approve the bid pricing for one new salt brine making unit for Road and Bridge in an amount not to exceed \$64,674.00.

VIII. PRESENTATIONS AND DISCUSSION ITEMS: presentations are materials of general concern where no action or vote is requested or anticipated.

IX. ADDITIONAL PUBLIC COMMENT IF NEEDED

X. ADJOURNMENT

**WORK SESSION IMMEDIATELY FOLLOWING REGULAR SESSION TO  
DISCUSS CUSHING HOSPITAL**

# **LEAVENWORTH COUNTY COMMISSIONERS MEETING SCHEDULE**

**Monday, November 30, 2020**

**Tuesday, December 1, 2020**

**Wednesday, December 2, 2020**

9:00 a.m.      Leavenworth County Commission meeting  
• Commission Meeting Room, 300 Walnut, Leavenworth KS

**Thursday, December 3, 2020**

**Friday, December 4, 2020**

ALL SUCH OTHER BUSINESS THAT MAY COME BEFORE THE COMMISSION

ALL MEETINGS ARE OPEN TO THE PUBLIC

COMMENTS SHOULD BE OF GENERAL INTEREST OF THE PUBLIC AND SUBJECT TO THE RULES OF DECORUM

\*\*\*\*\*November 25, 2020\*\*\*\*\*

The Board of County Commissioners met in a regular session on Wednesday, November 25, 2020. Commissioner Schimke, Commissioner Stieben and Commissioner Kaaz are present; Commissioner Culbertson is present by phone; Commissioner Smith is absent; Also present: Mark Loughry, County Administrator; Janet Klasinski, County Clerk

Residents: Joe Herring, Eric Vetter, Jason Claire, Pat Proctor, Ed and Cindy Irvine, Jewel West, April Cromer, Kris Roberts, Lisa Weakley

***A motion was made by Commissioner Schimke and seconded by Commissioner Kaaz to appoint Mike Stieben as temporary chair and authorize him to sign any and all documents required.***

***Motion passed, 3-0.***

PUBLIC COMMENT:

April Cromer, Jason Claire, Pat Proctor commented on an agenda item.

Jeff McCowan and David French commented by phone on an agenda item.

ADMINISTRATIVE BUSINESS:

Commissioner Kaaz requested to remove the check registry from the consent agenda.

***A motion was made by Commissioner Schimke and seconded by Commissioner Culbertson to approve the consent agenda for Wednesday, November 25, 2020 without the check register as presented.***

***Motion passed, 4-0.***

***A motion was made by Commissioner Schimke and seconded by Commissioner Culbertson to approve the check registry as presented.***

***Motion passed, 3-0. Commissioner Kaaz abstained.***

Board Order 2020-8 was presented for approval by the Board.

Commissioners Schimke and Kaaz commented about the mask mandate.

***A motion was made by Commissioner Schimke and seconded by Commissioner Culbertson as the Board of County Commissioners of the County of Leavenworth, Kansas relating to public health, making certain findings as authorized by the provisions of K.S.A. 48-925, and adopting an order pursuant to statute to opt out of the provisions of Executive Order No. 20-68.***

***Motion passed, 3-1 Commissioner Kaaz voting nay.***

Mark Loughry presented recommendations from the CARES Act Funding committee for the distribution of the CARES Act funding grants.

Lisa Weakley spoke about the CARES Act Funding and the application process.

***A motion was made by Commissioner Schimke and seconded by Commissioner Kaaz to approve CARES Act relief fund grant awards as recommended by the CARES Act committee.***

***Motion passed, 4-0.***



Ed Irvine commented on a non- agenda item.

*A motion was made by Commissioner Kaaz and seconded by Commissioner Schimke to adjourn.  
Motion passed, 4-0.*

The Board adjourned at 10:09 a.m.

Draft

# **LEAVENWORTH COUNTY COMMISSIONERS MEETING SCHEDULE**

**Monday, December 7, 2020**

**Tuesday, December 8, 2020**

**Wednesday, December 9, 2020**

9:00 a.m. Leavenworth County Commission meeting  
• Commission Meeting Room, 300 Walnut, Leavenworth KS

**Thursday, December 10, 2020**

11:30 a.m. LCDC meeting via Zoom

**Friday, December 11, 2020**

ALL SUCH OTHER BUSINESS THAT MAY COME BEFORE THE COMMISSION

ALL MEETINGS ARE OPEN TO THE PUBLIC

COMMENTS SHOULD BE OF GENERAL INTEREST OF THE PUBLIC AND SUBJECT TO THE RULES OF DECORUM

TYPES OF CHECKS SELECTED: \* ALL TYPES

			P.O.NUMBER	CHECK#					
1513	ADVANCED AUTOMOTIVE	ADVANCED AUTOMOTIVE	316970	90357 AP	11/24/2020	0-001-5-05-213	VEH MAINT/SUPPLIES EMS	128.78	
1513	ADVANCED AUTOMOTIVE	ADVANCED AUTOMOTIVE	316970	90357 AP	11/24/2020	0-001-5-05-213	VEH MAINT/SUPPLIES EMS	1,199.89	
1513	ADVANCED AUTOMOTIVE	ADVANCED AUTOMOTIVE	316970	90357 AP	11/24/2020	0-001-5-05-213	VEH MAINT/SUPPLIES EMS	800.39	
1513	ADVANCED AUTOMOTIVE	ADVANCED AUTOMOTIVE	316970	90357 AP	11/24/2020	0-001-5-05-213	VEH MAINT/SUPPLIES EMS	587.89	
1513	ADVANCED AUTOMOTIVE	ADVANCED AUTOMOTIVE	316970	90357 AP	11/24/2020	0-001-5-05-213	VEH MAINT/SUPPLIES EMS	328.14	
1513	ADVANCED AUTOMOTIVE	ADVANCED AUTOMOTIVE	316970	90357 AP	11/24/2020	0-001-5-05-213	VEH MAINT/SUPPLIES EMS	2,117.89	
1513	ADVANCED AUTOMOTIVE	ADVANCED AUTOMOTIVE	316970	90357 AP	11/24/2020	0-001-5-05-213	VEH MAINT/SUPPLIES EMS	258.64	
1513	ADVANCED AUTOMOTIVE	ADVANCED AUTOMOTIVE	316970	90357 AP	11/24/2020	0-001-5-05-213	VEH MAINT/SUPPLIES EMS	85.85	
1513	ADVANCED AUTOMOTIVE	ADVANCED AUTOMOTIVE	316970	90357 AP	11/24/2020	0-001-5-05-213	VEH MAINT/SUPPLIES EMS	132.00	
1513	ADVANCED AUTOMOTIVE	ADVANCED AUTOMOTIVE	316970	90357 AP	11/24/2020	0-001-5-05-306	VEH MAINT/SUPPLIES EMS	6.38	
1513	ADVANCED AUTOMOTIVE	ADVANCED AUTOMOTIVE	316970	90357 AP	11/24/2020	0-001-5-05-306	VEH MAINT/SUPPLIES EMS	469.52	
1513	ADVANCED AUTOMOTIVE	ADVANCED AUTOMOTIVE	316970	90357 AP	11/24/2020	0-001-5-05-306	VEH MAINT/SUPPLIES EMS	989.14	
1513	ADVANCED AUTOMOTIVE	ADVANCED AUTOMOTIVE	316970	90357 AP	11/24/2020	0-001-5-05-306	VEH MAINT/SUPPLIES EMS	684.15	
1513	ADVANCED AUTOMOTIVE	ADVANCED AUTOMOTIVE	316970	90357 AP	11/24/2020	0-001-5-05-306	VEH MAINT/SUPPLIES EMS	217.09	
1513	ADVANCED AUTOMOTIVE	ADVANCED AUTOMOTIVE	316970	90357 AP	11/24/2020	0-001-5-05-306	VEH MAINT/SUPPLIES EMS	1,642.52	
1513	ADVANCED AUTOMOTIVE	ADVANCED AUTOMOTIVE	316970	90357 AP	11/24/2020	0-001-5-05-306	VEH MAINT/SUPPLIES EMS	127.32	
1513	ADVANCED AUTOMOTIVE	ADVANCED AUTOMOTIVE	316970	90357 AP	11/24/2020	0-001-5-05-306	VEH MAINT/SUPPLIES EMS	4.25	
1513	ADVANCED AUTOMOTIVE	ADVANCED AUTOMOTIVE	316970	90357 AP	11/24/2020	0-001-5-05-306	VEH MAINT/SUPPLIES EMS	344.72	
*** VENDOR								1513 TOTAL	10,124.56
2456	AMERICAN DUCT CLEANI	AMERICAN DUCT CLEANING INC	316973	90360 AP	11/24/2020	0-001-5-07-208	4 COMMECIAL DRYER VENTS CLEANE	500.00	
215	BASEHOR HISTORICAL	BASEHOR HISTORICAL MUSEUM SOCI	316952	90348 AP	11/23/2020	0-001-5-25-240	PER 2020 LVCO BUDGET	1,560.00	
1065	BTX	BTX KS, INC	316953	90349 AP	11/23/2020	0-001-5-07-219	INMATE X-RAYS	78.00	
648	COMMERCE BANK-COMMER	COMMERCE BANK-COMMERCIAL CARDS	317025	90408 AP	11/25/2020	0-001-5-05-202	EMS MAINT TNG, UNIFORMS, MILEA	38.30	
648	COMMERCE BANK-COMMER	COMMERCE BANK-COMMERCIAL CARDS	317025	90408 AP	11/25/2020	0-001-5-05-202	EMS TNG,SUPPLIES,UNIFORMS,CONT	3,060.28	
648	COMMERCE BANK-COMMER	COMMERCE BANK-COMMERCIAL CARDS	317025	90408 AP	11/25/2020	0-001-5-05-205	EMS MAINT TNG, UNIFORMS, MILEA	22.50	
648	COMMERCE BANK-COMMER	COMMERCE BANK-COMMERCIAL CARDS	317025	90408 AP	11/25/2020	0-001-5-05-209	EMS TNG,SUPPLIES,UNIFORMS,CONT	37.50	
648	COMMERCE BANK-COMMER	COMMERCE BANK-COMMERCIAL CARDS	317025	90408 AP	11/25/2020	0-001-5-05-212	EMS TNG,SUPPLIES,UNIFORMS,CONT	99.90	
648	COMMERCE BANK-COMMER	COMMERCE BANK-COMMERCIAL CARDS	317025	90408 AP	11/25/2020	0-001-5-05-216	EMS TNG,SUPPLIES,UNIFORMS,CONT	448.10	
648	COMMERCE BANK-COMMER	COMMERCE BANK-COMMERCIAL CARDS	317025	90408 AP	11/25/2020	0-001-5-05-282	EMS TNG,SUPPLIES,UNIFORMS,CONT	329.53	
648	COMMERCE BANK-COMMER	COMMERCE BANK-COMMERCIAL CARDS	317025	90408 AP	11/25/2020	0-001-5-05-301	EMS TNG,SUPPLIES,UNIFORMS,CONT	527.94	
648	COMMERCE BANK-COMMER	COMMERCE BANK-COMMERCIAL CARDS	317025	90408 AP	11/25/2020	0-001-5-05-306	EMS MAINT TNG, UNIFORMS, MILEA	922.68	
648	COMMERCE BANK-COMMER	COMMERCE BANK-COMMERCIAL CARDS	317025	90408 AP	11/25/2020	0-001-5-05-306	EMS MAINT TNG, UNIFORMS, MILEA	134.43	
648	COMMERCE BANK-COMMER	COMMERCE BANK-COMMERCIAL CARDS	317025	90408 AP	11/25/2020	0-001-5-05-306	EMS MAINT TNG, UNIFORMS, MILEA	54.97	
648	COMMERCE BANK-COMMER	COMMERCE BANK-COMMERCIAL CARDS	317025	90408 AP	11/25/2020	0-001-5-05-350	EMS MAINT TNG, UNIFORMS, MILEA	17.97	
648	COMMERCE BANK-COMMER	COMMERCE BANK-COMMERCIAL CARDS	317025	90408 AP	11/25/2020	0-001-5-05-350	EMS MAINT TNG, UNIFORMS, MILEA	13.97	
648	COMMERCE BANK-COMMER	COMMERCE BANK-COMMERCIAL CARDS	317025	90408 AP	11/25/2020	0-001-5-05-350	EMS MAINT TNG, UNIFORMS, MILEA	54.66	
648	COMMERCE BANK-COMMER	COMMERCE BANK-COMMERCIAL CARDS	317025	90408 AP	11/25/2020	0-001-5-05-350	EMS TNG,SUPPLIES,UNIFORMS,CONT	1,692.14	
648	COMMERCE BANK-COMMER	COMMERCE BANK-COMMERCIAL CARDS	317025	90408 AP	11/25/2020	0-001-5-05-381	EMS TNG,SUPPLIES,UNIFORMS,CONT	7,624.45	
648	COMMERCE BANK-COMMER	COMMERCE BANK-COMMERCIAL CARDS	317025	90408 AP	11/25/2020	0-001-5-06-205	WATER FOR PLANNING COMMISSION	14.46	
648	COMMERCE BANK-COMMER	COMMERCE BANK-COMMERCIAL CARDS	317025	90408 AP	11/25/2020	0-001-5-06-220	CODES/ZONING, SAFETY COMMITTEE	295.00	
648	COMMERCE BANK-COMMER	COMMERCE BANK-COMMERCIAL CARDS	317025	90408 AP	11/25/2020	0-001-5-06-291	ESRI - NEWARCGIS LICENSE	3,820.00	
648	COMMERCE BANK-COMMER	COMMERCE BANK-COMMERCIAL CARDS	317025	90408 AP	11/25/2020	0-001-5-06-301	CODES/ZONING, SAFETY COMMITTEE	387.27	
648	COMMERCE BANK-COMMER	COMMERCE BANK-COMMERCIAL CARDS	317025	90408 AP	11/25/2020	0-001-5-06-379	ESRI - NEWARCGIS LICENSE	480.00	
648	COMMERCE BANK-COMMER	COMMERCE BANK-COMMERCIAL CARDS	317025	90408 AP	11/25/2020	0-001-5-06-381	ESRI - NEWARCGIS LICENSE	2,000.00	
648	COMMERCE BANK-COMMER	COMMERCE BANK-COMMERCIAL CARDS	317025	90408 AP	11/25/2020	0-001-5-07-202	SHF PRISONER HEALTH,TNG,TVL,JA	35.00	
648	COMMERCE BANK-COMMER	COMMERCE BANK-COMMERCIAL CARDS	317025	90408 AP	11/25/2020	0-001-5-07-202	SHF PRISONER HEALTH,TNG,TVL,JA	370.00	
648	COMMERCE BANK-COMMER	COMMERCE BANK-COMMERCIAL CARDS	317025	90408 AP	11/25/2020	0-001-5-07-202	SHF PRISONER HEALTH,TNG,TVL,JA	75.00	
648	COMMERCE BANK-COMMER	COMMERCE BANK-COMMERCIAL CARDS	317025	90408 AP	11/25/2020	0-001-5-07-202	SHF PRISONER HEALTH,TNG,TVL,JA	250.00	
648	COMMERCE BANK-COMMER	COMMERCE BANK-COMMERCIAL CARDS	317025	90408 AP	11/25/2020	0-001-5-07-202	SHF PRISONER HEALTH,TNG,TVL,JA	85.00	
648	COMMERCE BANK-COMMER	COMMERCE BANK-COMMERCIAL CARDS	317025	90408 AP	11/25/2020	0-001-5-07-208	SHERIFF:CONTR,SUPPLIES,EQUIP,J	122.00	
648	COMMERCE BANK-COMMER	COMMERCE BANK-COMMERCIAL CARDS	317025	90408 AP	11/25/2020	0-001-5-07-211	SHF PRISONER HEALTH,TNG,TVL,JA	101.33	
648	COMMERCE BANK-COMMER	COMMERCE BANK-COMMERCIAL CARDS	317025	90408 AP	11/25/2020	0-001-5-07-211	SHF PRISONER HEALTH,TNG,TVL,JA	260.28	

TYPES OF CHECKS SELECTED: \* ALL TYPES

			P.O.NUMBER	CHECK#						
648	COMMERCE BANK-COMMER	COMMERCE BANK-COMMERCIAL CARDS	317025	90408 AP	11/25/2020	0-001-5-07-213	SHF PRISONER HEALTH, TNG, TVL, JA	43.95		
648	COMMERCE BANK-COMMER	COMMERCE BANK-COMMERCIAL CARDS	317025	90408 AP	11/25/2020	0-001-5-07-218	SHF PRISONER HEALTH, TNG, TVL, JA	5.04		
648	COMMERCE BANK-COMMER	COMMERCE BANK-COMMERCIAL CARDS	317025	90408 AP	11/25/2020	0-001-5-07-218	SHF PRISONER HEALTH, TNG, TVL, JA	17.14		
648	COMMERCE BANK-COMMER	COMMERCE BANK-COMMERCIAL CARDS	317025	90408 AP	11/25/2020	0-001-5-07-219	SHERIFF: CONTR, SUPPLIES, EQUIP, J	79.91		
648	COMMERCE BANK-COMMER	COMMERCE BANK-COMMERCIAL CARDS	317025	90408 AP	11/25/2020	0-001-5-07-219	SHF PRISONER HEALTH, TNG, TVL, JA	1,778.23		
648	COMMERCE BANK-COMMER	COMMERCE BANK-COMMERCIAL CARDS	317025	90408 AP	11/25/2020	0-001-5-07-219	SHF PRISONER HEALTH, TNG, TVL, JA	20.50		
648	COMMERCE BANK-COMMER	COMMERCE BANK-COMMERCIAL CARDS	317025	90408 AP	11/25/2020	0-001-5-07-251	SHF PRISONER HEALTH, TNG, TVL, JA	178.30		
648	COMMERCE BANK-COMMER	COMMERCE BANK-COMMERCIAL CARDS	317025	90408 AP	11/25/2020	0-001-5-07-301	SHERIFF: CONTR, SUPPLIES, EQUIP, J	228.11		
648	COMMERCE BANK-COMMER	COMMERCE BANK-COMMERCIAL CARDS	317025	90408 AP	11/25/2020	0-001-5-07-302	SHF PRISONER HEALTH, TNG, TVL, JA	29.60		
648	COMMERCE BANK-COMMER	COMMERCE BANK-COMMERCIAL CARDS	317025	90408 AP	11/25/2020	0-001-5-07-303	SHERIFF: CONTR, SUPPLIES, EQUIP, J	202.39		
648	COMMERCE BANK-COMMER	COMMERCE BANK-COMMERCIAL CARDS	317025	90408 AP	11/25/2020	0-001-5-07-305	SHERIFF: CONTR, SUPPLIES, EQUIP, J	182.51		
648	COMMERCE BANK-COMMER	COMMERCE BANK-COMMERCIAL CARDS	317025	90408 AP	11/25/2020	0-001-5-07-350	SHF PRISONER HEALTH, TNG, TVL, JA	88.60		
648	COMMERCE BANK-COMMER	COMMERCE BANK-COMMERCIAL CARDS	317025	90408 AP	11/25/2020	0-001-5-07-353	SHERIFF: CONTR, SUPPLIES, EQUIP, J	127.98		
648	COMMERCE BANK-COMMER	COMMERCE BANK-COMMERCIAL CARDS	317025	90408 AP	11/25/2020	0-001-5-07-354	EOC ANNUAL VOLUNTEER RECOGNITI	445.05		
648	COMMERCE BANK-COMMER	COMMERCE BANK-COMMERCIAL CARDS	317025	90408 AP	11/25/2020	0-001-5-07-354	EOC ANNUAL VOLUNTEER RECOGNITI	35.00		
648	COMMERCE BANK-COMMER	COMMERCE BANK-COMMERCIAL CARDS	317025	90408 AP	11/25/2020	0-001-5-07-354	EOC ANNUAL VOLUNTEER RECOGNITI	20.00		
648	COMMERCE BANK-COMMER	COMMERCE BANK-COMMERCIAL CARDS	317025	90408 AP	11/25/2020	0-001-5-07-356	SHF PRISONER HEALTH, TNG, TVL, JA	69.97		
648	COMMERCE BANK-COMMER	COMMERCE BANK-COMMERCIAL CARDS	317025	90408 AP	11/25/2020	0-001-5-07-357	SHF PRISONER HEALTH, TNG, TVL, JA	175.31		
648	COMMERCE BANK-COMMER	COMMERCE BANK-COMMERCIAL CARDS	317025	90408 AP	11/25/2020	0-001-5-07-359	SHERIFF: CONTR, SUPPLIES, EQUIP, J	1,058.57		
648	COMMERCE BANK-COMMER	COMMERCE BANK-COMMERCIAL CARDS	317025	90408 AP	11/25/2020	0-001-5-07-359	SHF PRISONER HEALTH, TNG, TVL, JA	154.99		
648	COMMERCE BANK-COMMER	COMMERCE BANK-COMMERCIAL CARDS	317025	90408 AP	11/25/2020	0-001-5-07-359	SHF PRISONER HEALTH, TNG, TVL, JA	49.80		
648	COMMERCE BANK-COMMER	COMMERCE BANK-COMMERCIAL CARDS	317025	90408 AP	11/25/2020	0-001-5-07-360	SHERIFF: CONTR, SUPPLIES, EQUIP, J	88.20		
648	COMMERCE BANK-COMMER	COMMERCE BANK-COMMERCIAL CARDS	317025	90408 AP	11/25/2020	0-001-5-07-360	SHF PRISONER HEALTH, TNG, TVL, JA	446.00		
648	COMMERCE BANK-COMMER	COMMERCE BANK-COMMERCIAL CARDS	317025	90408 AP	11/25/2020	0-001-5-07-360	SHF PRISONER HEALTH, TNG, TVL, JA	6.00		
648	COMMERCE BANK-COMMER	COMMERCE BANK-COMMERCIAL CARDS	317025	90408 AP	11/25/2020	0-001-5-07-360	SHF PRISONER HEALTH, TNG, TVL, JA	165.00		
648	COMMERCE BANK-COMMER	COMMERCE BANK-COMMERCIAL CARDS	317025	90408 AP	11/25/2020	0-001-5-07-362	SHERIFF: CONTR, SUPPLIES, EQUIP, J	216.00		
648	COMMERCE BANK-COMMER	COMMERCE BANK-COMMERCIAL CARDS	317025	90408 AP	11/25/2020	0-001-5-11-202	CO ATTY TNG, SUPPLIES, BOOKS	350.00		
648	COMMERCE BANK-COMMER	COMMERCE BANK-COMMERCIAL CARDS	317025	90408 AP	11/25/2020	0-001-5-11-301	CO ATTY TNG, SUPPLIES, BOOKS	1,935.93		
648	COMMERCE BANK-COMMER	COMMERCE BANK-COMMERCIAL CARDS	317025	90408 AP	11/25/2020	0-001-5-11-307	CO ATTY TNG, SUPPLIES, BOOKS	430.00		
648	COMMERCE BANK-COMMER	COMMERCE BANK-COMMERCIAL CARDS	317025	90408 AP	11/25/2020	0-001-5-14-259	HOME DEPOT - CH SECURITY	159.94		
648	COMMERCE BANK-COMMER	COMMERCE BANK-COMMERCIAL CARDS	317025	90408 AP	11/25/2020	0-001-5-14-332	SHF PRISONER HEALTH, TNG, TVL, JA	137.68		
648	COMMERCE BANK-COMMER	COMMERCE BANK-COMMERCIAL CARDS	317025	90408 AP	11/25/2020	0-001-5-14-332	SHF PRISONER HEALTH, TNG, TVL, JA	37.47		
648	COMMERCE BANK-COMMER	COMMERCE BANK-COMMERCIAL CARDS	317025	90408 AP	11/25/2020	0-001-5-14-332	SHF PRISONER HEALTH, TNG, TVL, JA	33.86		
648	COMMERCE BANK-COMMER	COMMERCE BANK-COMMERCIAL CARDS	317025	90408 AP	11/25/2020	0-001-5-14-340	FLEETHOSTER - 25 UNITS MONTHLY	625.00		
648	COMMERCE BANK-COMMER	COMMERCE BANK-COMMERCIAL CARDS	317025	90408 AP	11/25/2020	0-001-5-19-213	DIST CT - TRAINING (CSO)	50.00		
648	COMMERCE BANK-COMMER	COMMERCE BANK-COMMERCIAL CARDS	317025	90408 AP	11/25/2020	0-001-5-19-301	DIST CT - CAMCORDER BATTERY	19.95		
648	COMMERCE BANK-COMMER	COMMERCE BANK-COMMERCIAL CARDS	317025	90408 AP	11/25/2020	0-001-5-19-301	DIST CT OFFICE SUPPLIES	27.74		
648	COMMERCE BANK-COMMER	COMMERCE BANK-COMMERCIAL CARDS	317025	90408 AP	11/25/2020	0-001-5-19-301	PROBATE/TAX BOOKS (DIST CT)	162.50		
648	COMMERCE BANK-COMMER	COMMERCE BANK-COMMERCIAL CARDS	317025	90408 AP	11/25/2020	0-001-5-28-301	QUILL - HR SUPPLIES	25.99		
648	COMMERCE BANK-COMMER	COMMERCE BANK-COMMERCIAL CARDS	317025	90408 AP	11/25/2020	0-001-5-28-301	QUILL - HR SUPPLIES	19.99		
648	COMMERCE BANK-COMMER	COMMERCE BANK-COMMERCIAL CARDS	317025	90408 AP	11/25/2020	0-001-5-28-301	QUILL - HR SUPPLIES	31.96		
648	COMMERCE BANK-COMMER	COMMERCE BANK-COMMERCIAL CARDS	317025	90408 AP	11/25/2020	0-001-5-28-301	QUILL - HR SUPPLIES	39.98		
648	COMMERCE BANK-COMMER	COMMERCE BANK-COMMERCIAL CARDS	317025	90408 AP	11/25/2020	0-001-5-31-209	B&G/JC MAINT, SUPPLIES MOWING,	199.92		
648	COMMERCE BANK-COMMER	COMMERCE BANK-COMMERCIAL CARDS	317025	90408 AP	11/25/2020	0-001-5-31-213	B&G POTS, SAFETY, CH/HD, JC+JANIT	1,208.99		
648	COMMERCE BANK-COMMER	COMMERCE BANK-COMMERCIAL CARDS	317025	90408 AP	11/25/2020	0-001-5-31-297	B&G POTS, SAFETY, CH/HD, JC+JANIT	60.00		
648	COMMERCE BANK-COMMER	COMMERCE BANK-COMMERCIAL CARDS	317025	90408 AP	11/25/2020	0-001-5-31-301	B&G POTS, SAFETY, CH/HD, JC+JANIT	108.02		
648	COMMERCE BANK-COMMER	COMMERCE BANK-COMMERCIAL CARDS	317025	90408 AP	11/25/2020	0-001-5-31-312	B&G JC/CTHSE MATERIAL, VEH MAI	179.00		
648	COMMERCE BANK-COMMER	COMMERCE BANK-COMMERCIAL CARDS	317025	90408 AP	11/25/2020	0-001-5-31-312	B&G/JC MAINT, SUPPLIES MOWING,	504.68		
648	COMMERCE BANK-COMMER	COMMERCE BANK-COMMERCIAL CARDS	317025	90408 AP	11/25/2020	0-001-5-31-315	B&G POTS, SAFETY, CH/HD, JC+JANIT	13.97		
648	COMMERCE BANK-COMMER	COMMERCE BANK-COMMERCIAL CARDS	317025	90408 AP	11/25/2020	0-001-5-31-316	B&G POTS, SAFETY, CH/HD, JC+JANIT	31.69		
648	COMMERCE BANK-COMMER	COMMERCE BANK-COMMERCIAL CARDS	317025	90408 AP	11/25/2020	0-001-5-31-320	B&G JC/CTHSE MATERIAL, VEH MAI	11.97		
648	COMMERCE BANK-COMMER	COMMERCE BANK-COMMERCIAL CARDS	317025	90408 AP	11/25/2020	0-001-5-31-320	B&G/JC MAINT, SUPPLIES MOWING,	37.71		

TYPES OF CHECKS SELECTED: \* ALL TYPES

			P.O.NUMBER	CHECK#						
648	COMMERCE BANK-COMMER	COMMERCE BANK-COMMERCIAL CARDS	317025	90408 AP	11/25/2020	0-001-5-31-383	B&G POTS, SAFETY, CH/HD, JC+JANIT		254.24	
648	COMMERCE BANK-COMMER	COMMERCE BANK-COMMERCIAL CARDS	317025	90408 AP	11/25/2020	0-001-5-31-390	B&G POTS, SAFETY, CH/HD, JC+JANIT		47.97	
648	COMMERCE BANK-COMMER	COMMERCE BANK-COMMERCIAL CARDS	317025	90408 AP	11/25/2020	0-001-5-31-391	B&G POTS, SAFETY, CH/HD, JC+JANIT		102.80	
648	COMMERCE BANK-COMMER	COMMERCE BANK-COMMERCIAL CARDS	317025	90408 AP	11/25/2020	0-001-5-32-209	B&G/JC MAINT, SUPPLIES MOWING,		359.99	
648	COMMERCE BANK-COMMER	COMMERCE BANK-COMMERCIAL CARDS	317025	90408 AP	11/25/2020	0-001-5-32-209	B&G POTS, SAFETY, CH/HD, JC+JANIT		512.84	
648	COMMERCE BANK-COMMER	COMMERCE BANK-COMMERCIAL CARDS	317025	90408 AP	11/25/2020	0-001-5-32-296	B&G POTS, SAFETY, CH/HD, JC+JANIT		973.98	
648	COMMERCE BANK-COMMER	COMMERCE BANK-COMMERCIAL CARDS	317025	90408 AP	11/25/2020	0-001-5-32-391	B&G JC/CTHSE MATERIAL, VEH MAI		95.34	
648	COMMERCE BANK-COMMER	COMMERCE BANK-COMMERCIAL CARDS	317025	90408 AP	11/25/2020	0-001-5-32-391	B&G/JC MAINT, SUPPLIES MOWING,		86.48	
648	COMMERCE BANK-COMMER	COMMERCE BANK-COMMERCIAL CARDS	317025	90408 AP	11/25/2020	0-001-5-32-391	B&G POTS, SAFETY, CH/HD, JC+JANIT		785.59	
648	COMMERCE BANK-COMMER	COMMERCE BANK-COMMERCIAL CARDS	317025	90408 AP	11/25/2020	0-001-5-32-391	JC PAINT/SUPPLIES		492.74	
648	COMMERCE BANK-COMMER	COMMERCE BANK-COMMERCIAL CARDS	317025	90408 AP	11/25/2020	0-001-5-41-201	APPRAISER OFFICE SUPPLIES, COP		23.72	
648	COMMERCE BANK-COMMER	COMMERCE BANK-COMMERCIAL CARDS	317025	90408 AP	11/25/2020	0-001-5-41-211	APPRAISER OFFICE SUPPLIES, COP		26.20	
648	COMMERCE BANK-COMMER	COMMERCE BANK-COMMERCIAL CARDS	317025	90408 AP	11/25/2020	0-001-5-41-301	APPRAISER OFFICE SUPPLIES, COP		185.82	
648	COMMERCE BANK-COMMER	COMMERCE BANK-COMMERCIAL CARDS	317025	90408 AP	11/25/2020	0-001-5-49-204	DELIVERY COSTS FOR ELECTION EQ		170.05	
648	COMMERCE BANK-COMMER	COMMERCE BANK-COMMERCIAL CARDS	317025	90408 AP	11/25/2020	0-001-5-49-204	DELIVERY COSTS FOR ELECTION EQ		174.47	
648	COMMERCE BANK-COMMER	COMMERCE BANK-COMMERCIAL CARDS	317025	90408 AP	11/25/2020	0-001-5-49-204	DELIVERY COSTS FOR ELECTION EQ		27.11	
648	COMMERCE BANK-COMMER	COMMERCE BANK-COMMERCIAL CARDS	317025	90408 AP	11/25/2020	0-001-5-49-240	ELECTION MACHINE DELIVERY		94.43	
648	COMMERCE BANK-COMMER	COMMERCE BANK-COMMERCIAL CARDS	317025	90408 AP	11/25/2020	0-001-5-49-240	ELECTION MACHINE DELIVERY		20.53	
648	COMMERCE BANK-COMMER	COMMERCE BANK-COMMERCIAL CARDS	317025	90408 AP	11/25/2020	0-001-5-49-240	ELECTION MACHINE DELIVERY		134.37	
648	COMMERCE BANK-COMMER	COMMERCE BANK-COMMERCIAL CARDS	317025	90408 AP	11/25/2020	0-001-5-49-240	ELECTION MACHINE DELIVERY		26.79	
648	COMMERCE BANK-COMMER	COMMERCE BANK-COMMERCIAL CARDS	317025	90408 AP	11/25/2020	0-001-5-49-301	VARIOUS ELECTION LABELS		37.66	
648	COMMERCE BANK-COMMER	COMMERCE BANK-COMMERCIAL CARDS	317025	90408 AP	11/25/2020	0-001-5-49-301	ELECTION SUPPLIES FROM AMAZON		73.20	
648	COMMERCE BANK-COMMER	COMMERCE BANK-COMMERCIAL CARDS	317025	90408 AP	11/25/2020	0-001-5-49-341	VARIOUS ELECTION LABELS		153.40	
648	COMMERCE BANK-COMMER	COMMERCE BANK-COMMERCIAL CARDS	317025	90408 AP	11/25/2020	0-001-5-49-341	VARIOUS ELECTION LABELS		49.47	
648	COMMERCE BANK-COMMER	COMMERCE BANK-COMMERCIAL CARDS	317025	90408 AP	11/25/2020	0-001-5-49-341	VARIOUS ELECTION LABELS		61.66	
648	COMMERCE BANK-COMMER	COMMERCE BANK-COMMERCIAL CARDS	317025	90408 AP	11/25/2020	0-001-5-49-341	MEALS FOR ELECTION WORKERS IN		36.07	
648	COMMERCE BANK-COMMER	COMMERCE BANK-COMMERCIAL CARDS	317025	90408 AP	11/25/2020	0-001-5-49-341	MEALS FOR ELECTION WORKERS IN		78.25	
648	COMMERCE BANK-COMMER	COMMERCE BANK-COMMERCIAL CARDS	317025	90408 AP	11/25/2020	0-001-5-49-341	MEALS FOR ELECTION WORKERS IN		163.43	
648	COMMERCE BANK-COMMER	COMMERCE BANK-COMMERCIAL CARDS	317025	90408 AP	11/25/2020	0-001-5-49-341	ELECTION SUPPLIES FROM AMAZON		166.68	
648	COMMERCE BANK-COMMER	COMMERCE BANK-COMMERCIAL CARDS	317025	90408 AP	11/25/2020	0-001-5-49-341	ELECTION SUPPLIES FROM AMAZON		37.77	
648	COMMERCE BANK-COMMER	COMMERCE BANK-COMMERCIAL CARDS	317025	90408 AP	11/25/2020	0-001-5-49-341	ELECTION SUPPLIES FROM AMAZON		209.75	
648	COMMERCE BANK-COMMER	COMMERCE BANK-COMMERCIAL CARDS	317025	90408 AP	11/25/2020	0-001-5-49-341	ELECTION SUPPLIES FROM AMAZON		131.22	
648	COMMERCE BANK-COMMER	COMMERCE BANK-COMMERCIAL CARDS	317025	90408 AP	11/25/2020	0-001-5-49-342	PPE DELIVERY - ELECTION (COVID		51.37	
648	COMMERCE BANK-COMMER	COMMERCE BANK-COMMERCIAL CARDS	317025	90408 AP	11/25/2020	0-001-5-49-342	SOCIAL DISTANCESITCKERS - ELEC		59.80	
648	COMMERCE BANK-COMMER	COMMERCE BANK-COMMERCIAL CARDS	317025	90408 AP	11/25/2020	0-001-5-53-301	NOX WEED: CHAIN SAW PARTS, JAC		230.12	
648	COMMERCE BANK-COMMER	COMMERCE BANK-COMMERCIAL CARDS	317025	90408 AP	11/25/2020	0-001-5-53-306	NOX WEED: CHAIN SAW PARTS, JAC		506.85	
648	COMMERCE BANK-COMMER	COMMERCE BANK-COMMERCIAL CARDS	317025	90408 AP	11/25/2020	0-001-5-53-307	NOX WEED: CHAIN SAW PARTS, JAC		593.09	
648	COMMERCE BANK-COMMER	COMMERCE BANK-COMMERCIAL CARDS	317025	90408 AP	11/25/2020	0-001-5-82-301	CODES/ZONING, SAFETY COMMITTEE		299.00	
							*** VENDOR	648 TOTAL		43,141.68
2611	DIRECTOR OF VEHICLES	KANSAS DEPT OF REVENUE	316978	90365 AP	11/24/2020	0-001-5-07-213	2 COVERT PLATES		80.00	
2900	EMS OVERPAYMENT	ACCENT	316979	90366 AP	11/24/2020	0-001-5-05-290	REFUND ON BEHALF OF CIGNA COB		488.32	
2900	EMS OVERPAYMENT	BILLY LOR	316980	90367 AP	11/24/2020	0-001-5-05-290	BCBS PD AFTER PT PAYMENT		773.00	
							*** VENDOR	2900 TOTAL		1,261.32
1227	EVANS REAL	EVANS REAL ESTATE CO	316981	90368 AP	11/24/2020	0-001-5-07-222	ANNUAL RENEWAL-VOLUNTEER INS		850.00	
86	EVERGY	EVERGY KANSAS CENTRAL INC	316954	90350 AP	11/23/2020	0-001-5-05-215	ELEC SVC EMS ADMIN/WIC/HEALTH		544.17	
4015	EXPRESS SEPTIC	ROY D HERRIOTT	316983	90370 AP	11/24/2020	0-001-5-07-208	PUMPED OUT GREASE TRAP JAIL KI		285.00	
5824	FRONTIER	FORENSIC MEDICAL HOLDINGS OF K	316985	90372 AP	11/24/2020	0-001-5-13-271	16455 OCTOBER AUTOPSIES, ET AL		1,850.00	
5824	FRONTIER	FORENSIC MEDICAL HOLDINGS OF K	316985	90372 AP	11/24/2020	0-001-5-13-271	16455 OCTOBER AUTOPSIES, ET AL		1,850.00	
5824	FRONTIER	FORENSIC MEDICAL HOLDINGS OF K	316985	90372 AP	11/24/2020	0-001-5-13-271	16455 OCTOBER AUTOPSIES, ET AL		1,850.00	
5824	FRONTIER	FORENSIC MEDICAL HOLDINGS OF K	316985	90372 AP	11/24/2020	0-001-5-13-271	16455 OCTOBER AUTOPSIES, ET AL		1,850.00	
5824	FRONTIER	FORENSIC MEDICAL HOLDINGS OF K	316985	90372 AP	11/24/2020	0-001-5-13-271	16455 OCTOBER AUTOPSIES, ET AL		1,850.00	
5824	FRONTIER	FORENSIC MEDICAL HOLDINGS OF K	316985	90372 AP	11/24/2020	0-001-5-13-271	16455 OCTOBER AUTOPSIES, ET AL		1,850.00	

START DATE: 11/21/2020 END DATE: 11/25/2020

TYPES OF CHECKS SELECTED: \* ALL TYPES

			P.O.NUMBER	CHECK#						
5824	FRONTIER	FORENSIC MEDICAL HOLDINGS OF K	316985	90372 AP	11/24/2020	0-001-5-13-271	16455	OCTOBER AUTOPSIES, ET AL	1,850.00	
5824	FRONTIER	FORENSIC MEDICAL HOLDINGS OF K	316985	90372 AP	11/24/2020	0-001-5-13-271	16455	OCTOBER AUTOPSIES, ET AL	1,850.00	
5824	FRONTIER	FORENSIC MEDICAL HOLDINGS OF K	316985	90372 AP	11/24/2020	0-001-5-13-271	16455	OCTOBER AUTOPSIES, ET AL	1,850.00	
5824	FRONTIER	FORENSIC MEDICAL HOLDINGS OF K	316985	90372 AP	11/24/2020	0-001-5-13-271	16455	OCTOBER AUTOPSIES, ET AL	1,850.00	
5824	FRONTIER	FORENSIC MEDICAL HOLDINGS OF K	316985	90372 AP	11/24/2020	0-001-5-13-271	16455	OCTOBER AUTOPSIES, ET AL	1,850.00	
5824	FRONTIER	FORENSIC MEDICAL HOLDINGS OF K	316985	90372 AP	11/24/2020	0-001-5-13-271	16455	OCTOBER AUTOPSIES, ET AL	1,850.00	
5824	FRONTIER	FORENSIC MEDICAL HOLDINGS OF K	316985	90372 AP	11/24/2020	0-001-5-13-271	16455	OCTOBER AUTOPSIES, ET AL	1,850.00	
5824	FRONTIER	FORENSIC MEDICAL HOLDINGS OF K	316985	90372 AP	11/24/2020	0-001-5-13-271	16455	OCTOBER AUTOPSIES, ET AL	1,850.00	
5824	FRONTIER	FORENSIC MEDICAL HOLDINGS OF K	316985	90372 AP	11/24/2020	0-001-5-13-271	16455	OCTOBER AUTOPSIES, ET AL	1,850.00	
5824	FRONTIER	FORENSIC MEDICAL HOLDINGS OF K	316985	90372 AP	11/24/2020	0-001-5-13-271	16455	OCTOBER AUTOPSIES, ET AL	1,850.00	
5824	FRONTIER	FORENSIC MEDICAL HOLDINGS OF K	316985	90372 AP	11/24/2020	0-001-5-13-271	16455	OCTOBER AUTOPSIES, ET AL	1,850.00	
5824	FRONTIER	FORENSIC MEDICAL HOLDINGS OF K	316985	90372 AP	11/24/2020	0-001-5-13-271	16455	OCTOBER AUTOPSIES, ET AL	50.00	
5824	FRONTIER	FORENSIC MEDICAL HOLDINGS OF K	316985	90372 AP	11/24/2020	0-001-5-13-271	16455	OCTOBER AUTOPSIES, ET AL	50.00	
5824	FRONTIER	FORENSIC MEDICAL HOLDINGS OF K	316985	90372 AP	11/24/2020	0-001-5-13-271	16455	OCTOBER AUTOPSIES, ET AL	50.00	
5824	FRONTIER	FORENSIC MEDICAL HOLDINGS OF K	316985	90372 AP	11/24/2020	0-001-5-13-271	16455	OCTOBER AUTOPSIES, ET AL	50.00	
5824	FRONTIER	FORENSIC MEDICAL HOLDINGS OF K	316985	90372 AP	11/24/2020	0-001-5-13-271	16455	OCTOBER AUTOPSIES, ET AL	25.00	
5824	FRONTIER	FORENSIC MEDICAL HOLDINGS OF K	316985	90372 AP	11/24/2020	0-001-5-13-271	16455	OCTOBER AUTOPSIES, ET AL	25.00	
5824	FRONTIER	FORENSIC MEDICAL HOLDINGS OF K	316985	90372 AP	11/24/2020	0-001-5-13-271	16455	OCTOBER AUTOPSIES, ET AL	25.00	
5824	FRONTIER	FORENSIC MEDICAL HOLDINGS OF K	316985	90372 AP	11/24/2020	0-001-5-13-271	16455	OCTOBER AUTOPSIES, ET AL	30.00	
5824	FRONTIER	FORENSIC MEDICAL HOLDINGS OF K	316985	90372 AP	11/24/2020	0-001-5-13-271	16455	OCTOBER AUTOPSIES, ET AL	200.00	
5824	FRONTIER	FORENSIC MEDICAL HOLDINGS OF K	316985	90372 AP	11/24/2020	0-001-5-13-271	16455	OCTOBER AUTOPSIES, ET AL	500.00	
5824	FRONTIER	FORENSIC MEDICAL HOLDINGS OF K	316985	90372 AP	11/24/2020	0-001-5-13-271	16455	OCTOBER AUTOPSIES, ET AL	500.00	
5824	FRONTIER	FORENSIC MEDICAL HOLDINGS OF K	316985	90372 AP	11/24/2020	0-001-5-13-271	16455	OCTOBER AUTOPSIES, ET AL	110.20	
5824	FRONTIER	FORENSIC MEDICAL HOLDINGS OF K	316985	90372 AP	11/24/2020	0-001-5-13-271	16455	OCTOBER AUTOPSIES, ET AL	14.00	
5824	FRONTIER	FORENSIC MEDICAL HOLDINGS OF K	316985	90372 AP	11/24/2020	0-001-5-13-271	16455	OCTOBER AUTOPSIES, ET AL	35.00	
5824	FRONTIER	FORENSIC MEDICAL HOLDINGS OF K	316985	90372 AP	11/24/2020	0-001-5-13-271	16455	OCTOBER AUTOPSIES, ET AL	88.00	
5824	FRONTIER	FORENSIC MEDICAL HOLDINGS OF K	316985	90372 AP	11/24/2020	0-001-5-13-271	16455	OCTOBER AUTOPSIES, ET AL	87.00	
								*** VENDOR	5824 TOTAL	31,439.20
4465	GRONIS	GRONIS HARDWARE INC	316986	90373 AP	11/24/2020	0-001-5-07-357		JAMIL MAINT, EXPENSE	32.59	
4465	GRONIS	GRONIS HARDWARE INC	316986	90373 AP	11/24/2020	0-001-5-07-359		JAMIL MAINT, EXPENSE	29.72	
4465	GRONIS	GRONIS HARDWARE INC	316986	90373 AP	11/24/2020	0-001-5-07-359		JAMIL MAINT, EXPENSE	28.99	
								*** VENDOR	4465 TOTAL	91.30
1016	HISTORICAL	LEAVENWORTH COUNTY HISTORICAL	316955	90351 AP	11/23/2020	0-001-5-25-240		PER 2020 LVCO BUDGET	8,073.00	
191	HOME DEPOT	HOME DEPOT USA	316987	90374 AP	11/24/2020	0-001-5-07-355		1137682 DISINFECTING WIPES, 90	140.20	
191	HOME DEPOT	HOME DEPOT USA	316987	90374 AP	11/24/2020	0-001-5-07-355		1137682 DISINFECTING WIPES, 90	271.83	
								*** VENDOR	191 TOTAL	412.03
1525	JAY'S UNIF	JAY'S UNIFORM	316988	90375 AP	11/24/2020	0-001-5-07-350		SHF UNIFORMS	352.89	
1525	JAY'S UNIF	JAY'S UNIFORM	316988	90375 AP	11/24/2020	0-001-5-07-350		SHF UNIFORMS	1,737.51	
1525	JAY'S UNIF	JAY'S UNIFORM	316988	90375 AP	11/24/2020	0-001-5-07-350		SHF UNIFORMS	17.59	
1525	JAY'S UNIF	JAY'S UNIFORM	316988	90375 AP	11/24/2020	0-001-5-07-350		SHF UNIFORMS	169.78	
1525	JAY'S UNIF	JAY'S UNIFORM	316988	90375 AP	11/24/2020	0-001-5-07-350		SHF UNIFORMS	365.36	
1525	JAY'S UNIF	JAY'S UNIFORM	316988	90375 AP	11/24/2020	0-001-5-07-350		SHF UNIFORMS	1,043.14	
								*** VENDOR	1525 TOTAL	3,686.27
4579	LEAV CO FA	LEAV CO FAIR ASSN LEAVENWORTH	316991	90378 AP	11/24/2020	0-001-5-25-201		FAIR BUILDING PER 2020 LVCO BU	17,000.00	
4579	LEAV CO FA	LEAV CO FAIR ASSN LEAVENWORTH	316991	90378 AP	11/24/2020	0-001-5-25-201		FAIR BUILDING PER 2020 LVCO BU	17,000.00	
								*** VENDOR	4579 TOTAL	34,000.00
855	LEAV HISTORICAL MUSE	LEAVENWORTH HISTORICAL MUSEUM	316956	90352 AP	11/23/2020	0-001-5-25-240		PER 2020 LVCO BUDGET	8,073.00	
855	LEAV HISTORICAL MUSE	CW PARKER CAROUSEL MUSEUM	316957	90353 AP	11/23/2020	0-001-5-25-240		PER 2020 LVCO BUDGET	8,073.00	
855	LEAV HISTORICAL MUSE	FRED HARVEY MUSEUM	316958	90354 AP	11/23/2020	0-001-5-25-240		PER 2020 LVCO BUDGET	8,073.00	
								*** VENDOR	855 TOTAL	24,219.00
4755	LEAV PAPER	LEAVENWORTH PAPER AND OFFICE S	316992	90379 AP	11/24/2020	0-001-5-07-301		SHERIF - OFFICE SUPPLIES, ENVE	1,400.00	
4755	LEAV PAPER	LEAVENWORTH PAPER AND OFFICE S	316992	90379 AP	11/24/2020	0-001-5-07-301		SHERIF - OFFICE SUPPLIES, ENVE	80.00	
4755	LEAV PAPER	LEAVENWORTH PAPER AND OFFICE S	316992	90379 AP	11/24/2020	0-001-5-07-301		SHERIF - OFFICE SUPPLIES, ENVE	32.26	

START DATE: 11/21/2020 END DATE: 11/25/2020

TYPES OF CHECKS SELECTED: \* ALL TYPES

		P.O.NUMBER	CHECK#							
4755	LEAV PAPER	LEAVENWORTH PAPER AND OFFICE S	316992	90379 AP	11/24/2020	0-001-5-07-305	SHERIF - OFFICE SUPPLIES, ENVE	900.00		
								*** VENDOR	4755 TOTAL	2,412.26
537	LEAV TIMES	LEAVENWORTH TIMES	316993	90380 AP	11/24/2020	0-001-5-03-218	1654 DLEINQUENT PERSONAL PROPE	668.25		
537	LEAV TIMES	LEAVENWORTH TIMES	316993	90380 AP	11/24/2020	0-001-5-06-220	267 RESOLUTION 2020-43 PUB	39.15		
								*** VENDOR	537 TOTAL	707.40
17244	MARLOW WHI	MARLOW WHITE UNIFORM CO	316994	90381 AP	11/24/2020	0-001-5-07-350	SHERIFF HONOR GUARD UNIFORMS	85.50		
2059	MIDWEST OFFICE TECH	MIDWEST OFFICE TECHNOLOGY INC	316996	90383 AP	11/24/2020	0-001-5-01-201	OPK595_K COPIER MAINT	177.81		
766	NATIONAL S	NATL SHERIFFS' ASSN	316998	90385 AP	11/24/2020	0-001-5-07-203	271454 DUES - SHF ANDREW DEDEK	135.00		
11799	O'REILLY A	O'REILLY AUTOMOTIVE	316999	90386 AP	11/24/2020	0-001-5-07-213	39279 TIRE GUAGE FOR UNIT 135	5.52		
11799	O'REILLY A	O'REILLY AUTOMOTIVE	316999	90386 AP	11/24/2020	0-001-5-07-213	39279 TIRE GUAGE FOR UNIT 135	.48-		
								*** VENDOR	11799 TOTAL	5.04
196	OLSSON	OLSSON, INC	317000	90387 AP	11/24/2020	0-001-5-06-206	11-1A ON CALL ENGINEERING SVCS	125.56		
196	OLSSON	OLSSON, INC	317000	90387 AP	11/24/2020	0-001-5-14-2	COMPREHENSIVE PLAN	4,133.80		
								*** VENDOR	196 TOTAL	4,259.36
7098	QUILL CORP	QUILL CORP	317002	90389 AP	11/24/2020	0-001-5-07-301	8333027 JANITOR, OFFICE, JAIL	122.80		
7098	QUILL CORP	QUILL CORP	317002	90389 AP	11/24/2020	0-001-5-07-301	8333027 JANITOR, OFFICE, JAIL	166.38		
7098	QUILL CORP	QUILL CORP	317002	90389 AP	11/24/2020	0-001-5-07-301	8333027 JANITOR, OFFICE, JAIL	25.84		
7098	QUILL CORP	QUILL CORP	317002	90389 AP	11/24/2020	0-001-5-07-301	8333027 JANITOR, OFFICE, JAIL	31.40		
7098	QUILL CORP	QUILL CORP	317002	90389 AP	11/24/2020	0-001-5-07-301	8333027 JANITOR, OFFICE, JAIL	.08		
7098	QUILL CORP	QUILL CORP	317002	90389 AP	11/24/2020	0-001-5-07-301	8333027 JANITOR, OFFICE, JAIL	329.82		
7098	QUILL CORP	QUILL CORP	317002	90389 AP	11/24/2020	0-001-5-07-301	8333027 JANITOR, OFFICE, JAIL	14.11		
7098	QUILL CORP	QUILL CORP	317002	90389 AP	11/24/2020	0-001-5-07-355	8333027 JANITOR, OFFICE, JAIL	15.90		
7098	QUILL CORP	QUILL CORP	317002	90389 AP	11/24/2020	0-001-5-07-355	8333027 JANITOR, OFFICE, JAIL	19.02		
7098	QUILL CORP	QUILL CORP	317002	90389 AP	11/24/2020	0-001-5-07-355	8333027 JANITOR, OFFICE, JAIL	33.14		
7098	QUILL CORP	QUILL CORP	317002	90389 AP	11/24/2020	0-001-5-07-359	8333027 JANITOR, OFFICE, JAIL	388.38		
								*** VENDOR	7098 TOTAL	1,146.87
217	RICHARD ALLEN	RICHARD ALLEN CULTURAL CENTER	316959	90355 AP	11/23/2020	0-001-5-25-240	PER 2020 COUNTY BUDGET	8,073.00		
341	SGI	SARAH GORDON, INCORPORATED	317003	90390 AP	11/24/2020	0-001-5-07-218	INMATE TRANSPORT	1,939.82		
248	SUMMIT FOOD	ELIOR, INC	317004	90391 AP	11/24/2020	0-001-5-07-261	C741000 INMATE MEALS	5,110.57		
248	SUMMIT FOOD	ELIOR, INC	317004	90391 AP	11/24/2020	0-001-5-07-261	C741000 INMATE MEALS	5,118.85		
248	SUMMIT FOOD	ELIOR, INC	317004	90391 AP	11/24/2020	0-001-5-07-261	C741000 INMATE MEALS	5,158.23		
248	SUMMIT FOOD	ELIOR, INC	317004	90391 AP	11/24/2020	0-001-5-07-261	C741000 INMATE MEALS	5,107.75		
								*** VENDOR	248 TOTAL	20,495.40
16	TONGANOXIE	TONGANOXIE COMMUNITY HISTORICA	316960	90356 AP	11/23/2020	0-001-5-25-240	PER 2020 LVCO BUDGET	8,073.00		
41	UNDERGROUN	UNDERGROUND VAULTS & STORAGE	317006	90393 AP	11/24/2020	0-001-5-03-236	101162 LEASE/RENTAL FOR TREASU	210.48		
141	WILLIAMS, MEGAN	MEGAN T WILLIAMS	317009	90396 AP	11/24/2020	0-001-5-11-240	APPEAL 2019-JV-99	600.00		
100	WITNESS LIST									
								TOTAL FUND 001		208,862.93
20588	ADVANTAGE	ADVANTAGE PRINTING	316971	90358 AP	11/24/2020	0-108-5-00-606	HEALTH DEPT/WIC BFPC	45.00		
648	COMMERCE BANK-COMMER	COMMERCE BANK-COMMERCIAL CARDS	317025	90408 AP	11/25/2020	0-108-5-00-202	HEALTH DEPT:CONR, PRIV PAY,WIC,	135.00		
648	COMMERCE BANK-COMMER	COMMERCE BANK-COMMERCIAL CARDS	317025	90408 AP	11/25/2020	0-108-5-00-213	HEALTH DEPT:CONR, PRIV PAY,WIC,	31.98		
648	COMMERCE BANK-COMMER	COMMERCE BANK-COMMERCIAL CARDS	317025	90408 AP	11/25/2020	0-108-5-00-219	HEALTH DEPT:CONR, PRIV PAY,WIC,	290.17		
648	COMMERCE BANK-COMMER	COMMERCE BANK-COMMERCIAL CARDS	317025	90408 AP	11/25/2020	0-108-5-00-280	HEALTH DEPT:CONR, PRIV PAY,WIC,	1,672.81		

warrants by vendor

START DATE: 11/21/2020 END DATE: 11/25/2020

TYPES OF CHECKS SELECTED: \* ALL TYPES

			P.O.NUMBER	CHECK#						
648	COMMERCE BANK-COMMER	COMMERCE BANK-COMMERCIAL CARDS	317025	90408 AP	11/25/2020	0-108-5-00-301	HEALTH DEPT:CONR, PRIV PAY,WIC,		17.49	
648	COMMERCE BANK-COMMER	COMMERCE BANK-COMMERCIAL CARDS	317025	90408 AP	11/25/2020	0-108-5-00-380	HEALTH DEPT:CONR, PRIV PAY,WIC,		198.00	
648	COMMERCE BANK-COMMER	COMMERCE BANK-COMMERCIAL CARDS	317025	90408 AP	11/25/2020	0-108-5-00-384	HEALTH DEPT:CONR, PRIV PAY,WIC,		7,255.20	
648	COMMERCE BANK-COMMER	COMMERCE BANK-COMMERCIAL CARDS	317025	90408 AP	11/25/2020	0-108-5-00-601	HEALTH DEPT:CONR, PRIV PAY,WIC,		93.53	
648	COMMERCE BANK-COMMER	COMMERCE BANK-COMMERCIAL CARDS	317025	90408 AP	11/25/2020	0-108-5-00-606	HEALTH DEPT:CONR, PRIV PAY,WIC,		424.37	
648	COMMERCE BANK-COMMER	COMMERCE BANK-COMMERCIAL CARDS	317025	90408 AP	11/25/2020	0-108-5-00-610	TEEN PREGNANCY/GOVERNOR'S CONF		150.00	
							*** VENDOR	648 TOTAL		10,268.55
86	EVERGY	EVERGY KANSAS CENTRAL INC	316954	90350 AP	11/23/2020	0-108-5-00-219	ELEC SVC EMS ADMIN/WIC/HEALTH		408.13	
86	EVERGY	EVERGY KANSAS CENTRAL INC	316954	90350 AP	11/23/2020	0-108-5-00-606	ELEC SVC EMS ADMIN/WIC/HEALTH		136.04	
							*** VENDOR	86 TOTAL		544.17
5316	E3 DIAGNOSTICS	E3 DAIGNOSTICS	316984	90371 AP	11/24/2020	0-108-5-00-204	GS2331 AUDIOMETER CALIBRATION,		140.00	
5316	E3 DIAGNOSTICS	E3 DAIGNOSTICS	316984	90371 AP	11/24/2020	0-108-5-00-204	GS2331 AUDIOMETER CALIBRATION,		125.00	
							*** VENDOR	5316 TOTAL		265.00
1629	KU PHYSICIANS	KANSAS UNIVERSITY PHYSICIANS I	316989	90376 AP	11/24/2020	0-108-5-00-280	PRENATAL CLINICAL SERVICES		1,800.00	
1629	KU PHYSICIANS	KANSAS UNIVERSITY PHYSICIANS I	316989	90376 AP	11/24/2020	0-108-5-00-280	PRENATAL CLINICAL SERVICES		1,800.00	
							*** VENDOR	1629 TOTAL		3,600.00
29712	TB SKIN TESTS	KANSAS DEPT OF HEALTH & ENVIRO	317005	90392 AP	11/24/2020	0-108-5-00-384	PPD (TB SKIN TEST)		100.00	
29712	TB SKIN TESTS	KANSAS DEPT OF HEALTH & ENVIRO	317005	90392 AP	11/24/2020	0-108-5-00-384	PPD (TB SKIN TEST)		8.00	
							*** VENDOR	29712 TOTAL		108.00
							TOTAL FUND 108			14,830.72
-----										
648	COMMERCE BANK-COMMER	COMMERCE BANK-COMMERCIAL CARDS	317025	90408 AP	11/25/2020	0-126-5-00-210	COMM CORRECTIONS, COMMODITIES,		40.01	
221	MIRROR	THE MIRROR INC	316997	90384 AP	11/24/2020	0-126-5-00-705	SUBSTANCE ABUSE ASSESSMENTS		175.00	
221	MIRROR	THE MIRROR INC	316997	90384 AP	11/24/2020	0-126-5-00-705	SUBSTANCE ABUSE ASSESSMENTS		40.00	
							*** VENDOR	221 TOTAL		215.00
							TOTAL FUND 126			255.01
-----										
648	COMMERCE BANK-COMMER	COMMERCE BANK-COMMERCIAL CARDS	317025	90408 AP	11/25/2020	0-127-5-00-3	COMM CORRECTIONS, COMMODITIES,		86.98	
							TOTAL FUND 127			86.98
-----										
2777	ALFRED BENESCH & CO	ALFRED BENESCH & CO	316972	90359 AP	11/24/2020	0-133-5-00-213	11-38 BR F-46 83%		772.00	
648	COMMERCE BANK-COMMER	COMMERCE BANK-COMMERCIAL CARDS	317025	90408 AP	11/25/2020	0-133-5-00-201	11-41 S/WARE MAINT,PARTS,TIRES		2.90	
648	COMMERCE BANK-COMMER	COMMERCE BANK-COMMERCIAL CARDS	317025	90408 AP	11/25/2020	0-133-5-00-203	11-40 BRIDGE,PARTS,SAFETY,TOOL		61.08	
648	COMMERCE BANK-COMMER	COMMERCE BANK-COMMERCIAL CARDS	317025	90408 AP	11/25/2020	0-133-5-00-209	11-41 S/WARE MAINT,PARTS,TIRES		37.50	
648	COMMERCE BANK-COMMER	COMMERCE BANK-COMMERCIAL CARDS	317025	90408 AP	11/25/2020	0-133-5-00-210	11-2 AT&T MOBILITY - DATACONN		87.66	
648	COMMERCE BANK-COMMER	COMMERCE BANK-COMMERCIAL CARDS	317025	90408 AP	11/25/2020	0-133-5-00-211	11-41 S/WARE MAINT,PARTS,TIRES		7,560.00	
648	COMMERCE BANK-COMMER	COMMERCE BANK-COMMERCIAL CARDS	317025	90408 AP	11/25/2020	0-133-5-00-214	11-41 S/WARE MAINT,PARTS,TIRES		143.07	
648	COMMERCE BANK-COMMER	COMMERCE BANK-COMMERCIAL CARDS	317025	90408 AP	11/25/2020	0-133-5-00-251	11-8 FREESTATE ELEC SVC TONGIE		47.18	
648	COMMERCE BANK-COMMER	COMMERCE BANK-COMMERCIAL CARDS	317025	90408 AP	11/25/2020	0-133-5-00-301	11-40 BRIDGE,PARTS,SAFETY,TOOL		89.98	
648	COMMERCE BANK-COMMER	COMMERCE BANK-COMMERCIAL CARDS	317025	90408 AP	11/25/2020	0-133-5-00-301	11-40 BRIDGE,PARTS,SAFETY,TOOL		173.76	
648	COMMERCE BANK-COMMER	COMMERCE BANK-COMMERCIAL CARDS	317025	90408 AP	11/25/2020	0-133-5-00-301	11-41 S/WARE MAINT,PARTS,TIRES		372.53	
648	COMMERCE BANK-COMMER	COMMERCE BANK-COMMERCIAL CARDS	317025	90408 AP	11/25/2020	0-133-5-00-304	11-40 BRIDGE,PARTS,SAFETY,TOOL		40.46	
648	COMMERCE BANK-COMMER	COMMERCE BANK-COMMERCIAL CARDS	317025	90408 AP	11/25/2020	0-133-5-00-309	11-41 S/WARE MAINT,PARTS,TIRES		1,878.38	
648	COMMERCE BANK-COMMER	COMMERCE BANK-COMMERCIAL CARDS	317025	90408 AP	11/25/2020	0-133-5-00-310	11-43 PARTS, FACILITY IMPR,SHO		60.69	
648	COMMERCE BANK-COMMER	COMMERCE BANK-COMMERCIAL CARDS	317025	90408 AP	11/25/2020	0-133-5-00-311	11-40 BRIDGE,PARTS,SAFETY,TOOL		156.10	
648	COMMERCE BANK-COMMER	COMMERCE BANK-COMMERCIAL CARDS	317025	90408 AP	11/25/2020	0-133-5-00-311	11-43 PARTS, FACILITY IMPR,SHO		44.85	
648	COMMERCE BANK-COMMER	COMMERCE BANK-COMMERCIAL CARDS	317025	90408 AP	11/25/2020	0-133-5-00-312	11-43 PARTS, FACILITY IMPR,SHO		463.62	
648	COMMERCE BANK-COMMER	COMMERCE BANK-COMMERCIAL CARDS	317025	90408 AP	11/25/2020	0-133-5-00-312	11-41 S/WARE MAINT,PARTS,TIRES		45.93	
648	COMMERCE BANK-COMMER	COMMERCE BANK-COMMERCIAL CARDS	317025	90408 AP	11/25/2020	0-133-5-00-326	11-40 BRIDGE,PARTS,SAFETY,TOOL		1,543.59	
648	COMMERCE BANK-COMMER	COMMERCE BANK-COMMERCIAL CARDS	317025	90408 AP	11/25/2020	0-133-5-00-360	11-40 BRIDGE,PARTS,SAFETY,TOOL		22.99	
648	COMMERCE BANK-COMMER	COMMERCE BANK-COMMERCIAL CARDS	317025	90408 AP	11/25/2020	0-133-5-00-360	11-40 BRIDGE,PARTS,SAFETY,TOOL		919.00	
648	COMMERCE BANK-COMMER	COMMERCE BANK-COMMERCIAL CARDS	317025	90408 AP	11/25/2020	0-133-5-00-360	11-43 PARTS, FACILITY IMPR,SHO		7,108.93	



START DATE: 11/21/2020 END DATE: 11/25/2020

TYPES OF CHECKS SELECTED: \* ALL TYPES

			P.O.NUMBER	CHECK#					
648	COMMERCE BANK-COMMER	COMMERCE BANK-COMMERCIAL CARDS	317025	90408 AP	11/25/2020	0-133-5-00-360	11-41 S/WARE MAINT,PARTS,TIRES	1,260.21	
648	COMMERCE BANK-COMMER	COMMERCE BANK-COMMERCIAL CARDS	317025	90408 AP	11/25/2020	0-133-5-00-360	11-41 S/WARE MAINT,PARTS,TIRES	3,704.53	
648	COMMERCE BANK-COMMER	COMMERCE BANK-COMMERCIAL CARDS	317025	90408 AP	11/25/2020	0-133-5-00-363	11-43 PARTS, FACILITY IMPR,SHO	519.92	
648	COMMERCE BANK-COMMER	COMMERCE BANK-COMMERCIAL CARDS	317025	90408 AP	11/25/2020	0-133-5-00-364	11-40 BRIDGE,PARTS,SAFETY,TOOL	600.16	
648	COMMERCE BANK-COMMER	COMMERCE BANK-COMMERCIAL CARDS	317025	90408 AP	11/25/2020	0-133-5-00-364	11-41 S/WARE MAINT,PARTS,TIRES	428.63	
648	COMMERCE BANK-COMMER	COMMERCE BANK-COMMERCIAL CARDS	317025	90408 AP	11/25/2020	0-133-5-00-365	11-40 BRIDGE,PARTS,SAFETY,TOOL	649.99	
648	COMMERCE BANK-COMMER	COMMERCE BANK-COMMERCIAL CARDS	317025	90408 AP	11/25/2020	0-133-5-00-440	11-40 BRIDGE,PARTS,SAFETY,TOOL	193.28	
648	COMMERCE BANK-COMMER	COMMERCE BANK-COMMERCIAL CARDS	317025	90408 AP	11/25/2020	0-133-5-00-440	11-43 PARTS, FACILITY IMPR,SHO	102.88	
648	COMMERCE BANK-COMMER	COMMERCE BANK-COMMERCIAL CARDS	317025	90408 AP	11/25/2020	0-133-5-00-440	11-43 PARTS, FACILITY IMPR,SHO	11,107.46	
*** VENDOR								648 TOTAL	39,427.26
86	EVERGY	EVERGY KANSAS CENTRAL INC	316954	90350 AP	11/23/2020	0-133-5-00-251	11-42 ELEC SVC CO SHOP ET AL	695.92	
86	EVERGY	EVERGY KANSAS CENTRAL INC	316954	90350 AP	11/23/2020	0-133-5-00-251	11-42 ELEC SVC CO SHOP ET AL	320.39	
86	EVERGY	EVERGY KANSAS CENTRAL INC	316954	90350 AP	11/23/2020	0-133-5-00-251	11-42 ELEC SVC CO SHOP ET AL	23.03	
86	EVERGY	EVERGY KANSAS CENTRAL INC	316954	90350 AP	11/23/2020	0-133-5-00-251	11-42 ELEC SVC CO SHOP ET AL	137.51	
*** VENDOR								86 TOTAL	1,176.85
461	LEAV CO CO	LEAV CO COOP	316990	90377 AP	11/24/2020	0-133-5-00-304	11-39 OCT FUEL FLUIDS/LUBE	21,823.29	
461	LEAV CO CO	LEAV CO COOP	316990	90377 AP	11/24/2020	0-133-5-00-310	11-39 OCT FUEL FLUIDS/LUBE	1,139.05	
*** VENDOR								461 TOTAL	22,962.34
29034	MHS	MCAFEE HENDERSON SOLUTIONS	316995	90382 AP	11/24/2020	0-133-5-00-213	11-36 E-58 PR 2019.063.001	15,490.81	
196	OLSSON	OLSSON, INC	317000	90387 AP	11/24/2020	0-133-5-00-213	11-1A ON CALL ENGINEERING SVCS	376.69	
TOTAL FUND 133								80,205.95	
-----									
648	COMMERCE BANK-COMMER	COMMERCE BANK-COMMERCIAL CARDS	317025	90408 AP	11/25/2020	0-136-5-00-204	COMM CORR JISP/CMA TRAINING/SU	15.86	
648	COMMERCE BANK-COMMER	COMMERCE BANK-COMMERCIAL CARDS	317025	90408 AP	11/25/2020	0-136-5-00-224	COMM CORR JISP/CMA TRAINING/SU	15.87	
648	COMMERCE BANK-COMMER	COMMERCE BANK-COMMERCIAL CARDS	317025	90408 AP	11/25/2020	0-136-5-00-301	COMM CORR JISP/CMA TRAINING/SU	27.68	
648	COMMERCE BANK-COMMER	COMMERCE BANK-COMMERCIAL CARDS	317025	90408 AP	11/25/2020	0-136-5-00-321	COMM CORR JISP/CMA TRAINING/SU	27.68	
*** VENDOR								648 TOTAL	87.09
TOTAL FUND 136								87.09	
-----									
461	LEAV CO CO	LEAV CO COOP	316990	90377 AP	11/24/2020	0-137-5-00-304	11-7 DYED DIESEL	4,125.40	
29034	MHS	MCAFEE HENDERSON SOLUTIONS	316995	90382 AP	11/24/2020	0-137-5-00-213	11-6 178TH ST TO 10.24.20 2020	36,279.73	
TOTAL FUND 137								40,405.13	
-----									
648	COMMERCE BANK-COMMER	COMMERCE BANK-COMMERCIAL CARDS	317025	90408 AP	11/25/2020	0-144-5-00-2	COA PALS - PET COSTS FOR SENIO	101.12	
648	COMMERCE BANK-COMMER	COMMERCE BANK-COMMERCIAL CARDS	317025	90408 AP	11/25/2020	0-144-5-00-2	COA PALS - PET COSTS FOR SENIO	196.76	
648	COMMERCE BANK-COMMER	COMMERCE BANK-COMMERCIAL CARDS	317025	90408 AP	11/25/2020	0-144-5-00-2	COA PALS - PET COSTS FOR SENIO	185.12	
*** VENDOR								648 TOTAL	483.00
TOTAL FUND 144								483.00	
-----									
648	COMMERCE BANK-COMMER	COMMERCE BANK-COMMERCIAL CARDS	317025	90408 AP	11/25/2020	0-145-5-00-208	COA NONGRANT-PHONE, PHYSICALS, J	140.72	
648	COMMERCE BANK-COMMER	COMMERCE BANK-COMMERCIAL CARDS	317025	90408 AP	11/25/2020	0-145-5-00-210	COA NONGRANT-PHONE, PHYSICALS, J	100.00	
648	COMMERCE BANK-COMMER	COMMERCE BANK-COMMERCIAL CARDS	317025	90408 AP	11/25/2020	0-145-5-00-210	COA NONGRANT-PHONE, PHYSICALS, J	20.00	
648	COMMERCE BANK-COMMER	COMMERCE BANK-COMMERCIAL CARDS	317025	90408 AP	11/25/2020	0-145-5-00-213	COA NONGRANT-PHONE, PHYSICALS, J	17.18	
648	COMMERCE BANK-COMMER	COMMERCE BANK-COMMERCIAL CARDS	317025	90408 AP	11/25/2020	0-145-5-00-255	COA NONGRANT-PHONE, PHYSICALS, J	57.80	
648	COMMERCE BANK-COMMER	COMMERCE BANK-COMMERCIAL CARDS	317025	90408 AP	11/25/2020	0-145-5-00-255	COA NONGRANT-PHONE, PHYSICALS, J	89.12	
648	COMMERCE BANK-COMMER	COMMERCE BANK-COMMERCIAL CARDS	317025	90408 AP	11/25/2020	0-145-5-00-255	COA NONGRANT-PHONE, PHYSICALS, J	17.29	
648	COMMERCE BANK-COMMER	COMMERCE BANK-COMMERCIAL CARDS	317025	90408 AP	11/25/2020	0-145-5-00-256	COA C1&C2 MEALS/COMMODITIES	123.05	
648	COMMERCE BANK-COMMER	COMMERCE BANK-COMMERCIAL CARDS	317025	90408 AP	11/25/2020	0-145-5-00-256	COA C1&C2 MEALS/COMMODITIES	470.61	
648	COMMERCE BANK-COMMER	COMMERCE BANK-COMMERCIAL CARDS	317025	90408 AP	11/25/2020	0-145-5-00-301	COA NONGRANT-PHONE, PHYSICALS, J	50.31	
648	COMMERCE BANK-COMMER	COMMERCE BANK-COMMERCIAL CARDS	317025	90408 AP	11/25/2020	0-145-5-00-345	OLIVER PACKAGING - TRAYS FOR M	559.84	
648	COMMERCE BANK-COMMER	COMMERCE BANK-COMMERCIAL CARDS	317025	90408 AP	11/25/2020	0-145-5-00-345	OLIVER PACKAGING - TRAYS FOR M	2,141.25	
648	COMMERCE BANK-COMMER	COMMERCE BANK-COMMERCIAL CARDS	317025	90408 AP	11/25/2020	0-145-5-00-345	COA C1&C2 MEALS/COMMODITIES	26.92	

START DATE: 11/21/2020 END DATE: 11/25/2020

TYPES OF CHECKS SELECTED: \* ALL TYPES

			P.O.NUMBER	CHECK#						
648	COMMERCE BANK-COMMER	COMMERCE BANK-COMMERCIAL CARDS	317025	90408 AP	11/25/2020	0-145-5-00-345	COA C1&C2 MEALS/COMMODITIES		7.38	
648	COMMERCE BANK-COMMER	COMMERCE BANK-COMMERCIAL CARDS	317025	90408 AP	11/25/2020	0-145-5-00-345	COA C1&C2 MEALS/COMMODITIES		8.56	
648	COMMERCE BANK-COMMER	COMMERCE BANK-COMMERCIAL CARDS	317025	90408 AP	11/25/2020	0-145-5-00-345	COA C1&C2 MEALS/COMMODITIES		73.95	
648	COMMERCE BANK-COMMER	COMMERCE BANK-COMMERCIAL CARDS	317025	90408 AP	11/25/2020	0-145-5-00-345	COA C1&C2 MEALS/COMMODITIES		102.97	
648	COMMERCE BANK-COMMER	COMMERCE BANK-COMMERCIAL CARDS	317025	90408 AP	11/25/2020	0-145-5-00-345	COA C1&C2 MEALS/COMMODITIES		282.83	
648	COMMERCE BANK-COMMER	COMMERCE BANK-COMMERCIAL CARDS	317025	90408 AP	11/25/2020	0-145-5-05-201	COA C1&C2 MEALS/COMMODITIES		165.06	
648	COMMERCE BANK-COMMER	COMMERCE BANK-COMMERCIAL CARDS	317025	90408 AP	11/25/2020	0-145-5-05-301	OLIVER PACKAGING - TRAYS FOR M		751.01	
648	COMMERCE BANK-COMMER	COMMERCE BANK-COMMERCIAL CARDS	317025	90408 AP	11/25/2020	0-145-5-05-301	COA C1&C2 MEALS/COMMODITIES		36.12	
648	COMMERCE BANK-COMMER	COMMERCE BANK-COMMERCIAL CARDS	317025	90408 AP	11/25/2020	0-145-5-05-301	COA C1&C2 MEALS/COMMODITIES		9.89	
648	COMMERCE BANK-COMMER	COMMERCE BANK-COMMERCIAL CARDS	317025	90408 AP	11/25/2020	0-145-5-05-301	COA C1&C2 MEALS/COMMODITIES		11.48	
648	COMMERCE BANK-COMMER	COMMERCE BANK-COMMERCIAL CARDS	317025	90408 AP	11/25/2020	0-145-5-05-301	COA C1&C2 MEALS/COMMODITIES		99.20	
648	COMMERCE BANK-COMMER	COMMERCE BANK-COMMERCIAL CARDS	317025	90408 AP	11/25/2020	0-145-5-06-201	COA C1&C2 MEALS/COMMODITIES		170.39	
648	COMMERCE BANK-COMMER	COMMERCE BANK-COMMERCIAL CARDS	317025	90408 AP	11/25/2020	0-145-5-06-221	COA C1&C2 MEALS/COMMODITIES		113.59	
648	COMMERCE BANK-COMMER	COMMERCE BANK-COMMERCIAL CARDS	317025	90408 AP	11/25/2020	0-145-5-06-301	OLIVER PACKAGING - TRAYS FOR M		775.28	
648	COMMERCE BANK-COMMER	COMMERCE BANK-COMMERCIAL CARDS	317025	90408 AP	11/25/2020	0-145-5-06-301	COA C1&C2 MEALS/COMMODITIES		37.28	
648	COMMERCE BANK-COMMER	COMMERCE BANK-COMMERCIAL CARDS	317025	90408 AP	11/25/2020	0-145-5-06-301	COA C1&C2 MEALS/COMMODITIES		102.40	
648	COMMERCE BANK-COMMER	COMMERCE BANK-COMMERCIAL CARDS	317025	90408 AP	11/25/2020	0-145-5-06-321	OLIVER PACKAGING - TRAYS FOR M		516.85	
648	COMMERCE BANK-COMMER	COMMERCE BANK-COMMERCIAL CARDS	317025	90408 AP	11/25/2020	0-145-5-06-321	COA C1&C2 MEALS/COMMODITIES		24.85	
648	COMMERCE BANK-COMMER	COMMERCE BANK-COMMERCIAL CARDS	317025	90408 AP	11/25/2020	0-145-5-06-321	COA C1&C2 MEALS/COMMODITIES		68.27	
648	COMMERCE BANK-COMMER	COMMERCE BANK-COMMERCIAL CARDS	317025	90408 AP	11/25/2020	0-145-5-07-201	COA C1&C2 MEALS/COMMODITIES		12.00	
648	COMMERCE BANK-COMMER	COMMERCE BANK-COMMERCIAL CARDS	317025	90408 AP	11/25/2020	0-145-5-07-221	COA C1&C2 MEALS/COMMODITIES		56.80	
648	COMMERCE BANK-COMMER	COMMERCE BANK-COMMERCIAL CARDS	317025	90408 AP	11/25/2020	0-145-5-07-302	OLIVER PACKAGING - TRAYS FOR M		54.62	
648	COMMERCE BANK-COMMER	COMMERCE BANK-COMMERCIAL CARDS	317025	90408 AP	11/25/2020	0-145-5-07-302	COA C1&C2 MEALS/COMMODITIES		2.63	
648	COMMERCE BANK-COMMER	COMMERCE BANK-COMMERCIAL CARDS	317025	90408 AP	11/25/2020	0-145-5-07-302	COA C1&C2 MEALS/COMMODITIES		.72	
648	COMMERCE BANK-COMMER	COMMERCE BANK-COMMERCIAL CARDS	317025	90408 AP	11/25/2020	0-145-5-07-302	COA C1&C2 MEALS/COMMODITIES		.84	
648	COMMERCE BANK-COMMER	COMMERCE BANK-COMMERCIAL CARDS	317025	90408 AP	11/25/2020	0-145-5-07-302	COA C1&C2 MEALS/COMMODITIES		7.21	
648	COMMERCE BANK-COMMER	COMMERCE BANK-COMMERCIAL CARDS	317025	90408 AP	11/25/2020	0-145-5-07-321	OLIVER PACKAGING - TRAYS FOR M		258.43	
648	COMMERCE BANK-COMMER	COMMERCE BANK-COMMERCIAL CARDS	317025	90408 AP	11/25/2020	0-145-5-07-321	COA C1&C2 MEALS/COMMODITIES		12.43	
648	COMMERCE BANK-COMMER	COMMERCE BANK-COMMERCIAL CARDS	317025	90408 AP	11/25/2020	0-145-5-07-321	COA C1&C2 MEALS/COMMODITIES		34.13	
							*** VENDOR	648 TOTAL		7,611.26
86	EVERGY	EVERGY KANSAS CENTRAL INC	316954	90350 AP	11/23/2020	0-145-5-00-246	ELEC SVC COUNCIL ON AGING		686.88	
							TOTAL FUND 145			8,298.14
-----										
774	VAN KEPPEL	G W VAN KEPPEL	317007	90394 AP	11/24/2020	0-153-5-00-3	11-2 BP0005100 NEW OIL DISTRIB		226,450.00	
							TOTAL FUND 153			226,450.00
-----										
26521	BRUNSON BU	BRUNSON BUILDERS INC	316977	90364 AP	11/24/2020	0-160-5-00-402	REMOVE AND REPLACE PIT DOOR (T		2,175.00	
648	COMMERCE BANK-COMMER	COMMERCE BANK-COMMERCIAL CARDS	317025	90408 AP	11/25/2020	0-160-5-00-202	TRANSFER STATION - HHW,SUPPLIE		718.14	
648	COMMERCE BANK-COMMER	COMMERCE BANK-COMMERCIAL CARDS	317025	90408 AP	11/25/2020	0-160-5-00-203	TRANSFER STATION - HHW,SUPPLIE		125.00	
648	COMMERCE BANK-COMMER	COMMERCE BANK-COMMERCIAL CARDS	317025	90408 AP	11/25/2020	0-160-5-00-204	HAMM - LANDFILL CHARGES - OCTO		61,731.74	
648	COMMERCE BANK-COMMER	COMMERCE BANK-COMMERCIAL CARDS	317025	90408 AP	11/25/2020	0-160-5-00-208	TRANSFER STATION - HHW,SUPPLIE		229.64	
648	COMMERCE BANK-COMMER	COMMERCE BANK-COMMERCIAL CARDS	317025	90408 AP	11/25/2020	0-160-5-00-213	TRANSFER STATION MAINTENANCE		96.68	
648	COMMERCE BANK-COMMER	COMMERCE BANK-COMMERCIAL CARDS	317025	90408 AP	11/25/2020	0-160-5-00-263	TRANSFER STATION - HHW,SUPPLIE		47.74	
648	COMMERCE BANK-COMMER	COMMERCE BANK-COMMERCIAL CARDS	317025	90408 AP	11/25/2020	0-160-5-00-301	TRANSFER STATION - HHW,SUPPLIE		321.31	
							*** VENDOR	648 TOTAL		63,270.25
							TOTAL FUND 160			65,445.25
-----										
2405	GILMORE BELL	GILMORE & BELL, PC	316961	1525 AP	11/22/2020	0-171-5-00-401	11-7 SERIES 2020-A		60,000.00	
1646	KS ATTORNEY GENERAL	KANSAS ATTORNEY GENERAL	316962	1526 AP	11/22/2020	0-171-5-00-401	11-6 REVIEW 2020-A		330.00	
246	MCANANY CONSTRUCTION	MCANANY CONSTRUCTION INC	316963	1527 AP	11/22/2020	0-171-5-04-302	11-5 GROUP 5 DUST ABATEMENT		21,037.50	
196	OLSSON	OLSSON, INC	316964	1528 AP	11/22/2020	0-171-5-05-201	11-1(B) PROJ 019-2831		2,009.00	
289	STIFEL	STIFEL NICOLAUS & COMPANY INC	316965	1529 AP	11/22/2020	0-171-5-00-401	11-8 GO BONDS SERIES 2020-A		35,320.00	

TYPES OF CHECKS SELECTED: \* ALL TYPES

		P.O.NUMBER	CHECK#					TOTAL FUND 171	118,696.50	
2777	ALFRED BENESCH & CO	ALFRED BENESCH & CO	316972	90359 AP	11/24/2020	0-180-5-00-2	11-1 BR A-49 93.5%	1,130.43		
								TOTAL FUND 180	1,130.43	
2777	ALFRED BENESCH & CO	ALFRED BENESCH & CO	316972	90359 AP	11/24/2020	0-189-5-00-2	11-1 BR T-34 71.5%	383.81		
								TOTAL FUND 189	383.81	
648	COMMERCE BANK-COMMER	COMMERCE BANK-COMMERCIAL CARDS	317025	90408 AP	11/25/2020	0-195-5-00-290	DIRECTV FOR JDC	170.62		
648	COMMERCE BANK-COMMER	COMMERCE BANK-COMMERCIAL CARDS	317025	90408 AP	11/25/2020	0-195-5-00-390	HEALTH & COMFORT JDC	54.94		
								*** VENDOR	648 TOTAL	225.56
86	EVERGY	EVERGY KANSAS CENTRAL INC	316982	90369 AP	11/24/2020	0-195-5-00-290	ELEC SVC JDC	384.03		
2	WATER DEPT	WATER DEPT	317008	90395 AP	11/24/2020	0-195-5-00-290	WATER SVC JDC	111.16		
								TOTAL FUND 195	720.75	
648	COMMERCE BANK-COMMER	COMMERCE BANK-COMMERCIAL CARDS	317025	90408 AP	11/25/2020	0-210-5-00-3	MISC PARTS FOR SEWER DISTRICTS	10.99		
								TOTAL FUND 210	10.99	
648	COMMERCE BANK-COMMER	COMMERCE BANK-COMMERCIAL CARDS	317025	90408 AP	11/25/2020	0-212-5-00-3	MISC PARTS FOR SEWER DISTRICTS	10.99		
								TOTAL FUND 212	10.99	
342	PREMIER CONTRACTING	PREMIER CONTRACTING	317001	90388 AP	11/24/2020	0-215-5-03-207	JC - SYKLIGHT PER CONTRACT	68,401.00		
								TOTAL FUND 215	68,401.00	
648	COMMERCE BANK-COMMER	COMMERCE BANK-COMMERCIAL CARDS	317025	90408 AP	11/25/2020	0-218-5-00-3	MISC PARTS FOR SEWER DISTRICTS	10.99		
								TOTAL FUND 218	10.99	
2777	ALFRED BENESCH & CO	ALFRED BENESCH & CO	316972	90359 AP	11/24/2020	0-220-5-05-400	11-1 BR E-8 87.5%	531.13		
								TOTAL FUND 220	531.13	
2570	BOND ESCROW REFUND	ROBERT VAUGHN	316974	90361 AP	11/24/2020	0-503-5-00-2	11-2 REF ENTRANCE PERMIT FAIRM	125.00		
2570	BOND ESCROW REFUND	ANDREA & KEVIN BODEN	316975	90362 AP	11/24/2020	0-503-5-00-2	11-3 REF ENTRANCE PERMIT 163RD	100.00		
2570	BOND ESCROW REFUND	TERRY READY	316976	90363 AP	11/24/2020	0-503-5-00-2	REF ENTRANCE PERMIT MCINTYRE R	100.00		
								*** VENDOR	2570 TOTAL	325.00
								TOTAL FUND 503	325.00	
								TOTAL ALL CHECKS	835,631.79	

TYPES OF CHECKS SELECTED: \* ALL TYPES

FUND SUMMARY

001	GENERAL	208,862.93
108	COUNTY HEALTH	14,830.72
126	COMM CORR ADULT	255.01
127	COMM CORR ADULT NON GRANT	86.98
133	ROAD & BRIDGE	80,205.95
136	COMM CORR JUVENILE	87.09
137	LOCAL SERVICE ROAD & BRIDGE	40,405.13
144	PALS (PETS AND LOVING SENIORS	483.00
145	COUNCIL ON AGING	8,298.14
153	PUBLIC WORKS,EQUIP.RESERVE FUND	226,450.00
160	SOLID WASTE MANAGEMENT	65,445.25
171	S TAX CAP RD PROJ: 2015 SERIES	118,696.50
180	ALEX TWP TRAFFIC IMPACT	1,130.43
189	TONGANOXIE TWP TRAFFIC IMPACT	383.81
195	JUVENILE DETENTION	720.75
210	SEWER DISTRICT 1: HIGH CREST	10.99
212	SEWER DISTRICT 2: TIMBERLAKES	10.99
215	CAPITAL IMPROVEMENTS	68,401.00
218	SEWER DIST #5	10.99
220	CAP IMPR: RD & BRIDGE	531.13
503	ROAD & BRIDGE BOND ESCROW	325.00
	TOTAL ALL FUNDS	835,631.79

Consent Agenda 12-2-20  
 Checks 11/21-11/25

---



---

no ACH transactions this period.

**Leavenworth County  
Request for Board Action  
Resolution 2020-47 Special Use Permit  
James Rutledge's Agriculturally-Related Business**

**Date:** December 2, 2020  
**To:** Board of County Commissioners  
**From:** Planning & Zoning Staff

**Department Head Review:** Krystal Voth, Reviewed

**Additional Reviews as needed:**

**Budget Review  Administrator Review  Legal Review**

---

---

**Action Requested:** Approve Resolution 2020-47, a request for a Special Use Permit for James Rutledge's Agriculturally-Related business.

**Analysis:** This Special Use Permit would conditionally allow the rental agreements of two barns on his property for storage purposes. The barns are used by a long-haul trucker and an automotive hobby shop.

As was noted in the attached memo from the Public Works department, the route provided by the applicant is on a county route that does not allow for commercial vehicles in excess of 24,000 pounds, per Resolution 2009-50 (attached). This resolution also provides that the Board of County Commissioners have the authority to allow commercial vehicles to travel on such routes. Additionally, the resolution states that commercial vehicles may be allowed if a point of origin or destination is on such a route.

**Planning Commission Recommendation:** The Planning Commission voted 6-0 to recommend approval of Case No. DEV-20-104 (Resolution 2020-47) renewal of a Special Use Permit for James Rutledge's Agriculturally-Related Business.

**Alternatives:**

1. Approve Resolution 2020-47, Special Use Permit for James Rutledge's Agriculturally-Related Business, with Findings of Fact, and with or without conditions; or
2. Deny Resolution 2020-47, Special Use Permit for James Rutledge's Agriculturally-Related Business, with Findings of Fact; or
3. Revise or Modify the Planning Commission Recommendation to Resolution 2020-47, Special Use Permit for James Rutledge's Agriculturally-Related Business, with Findings of Fact; or
4. Continue to another date, time, and place; or
5. Remand the case back to the Planning Commission.

**Budgetary Impact:**

- X Not Applicable  
 Budgeted item with available funds  
 Non-Budgeted item with available funds through prioritization  
 Non-Budgeted item with additional funds requested

**Total Amount Requested:** \$0.00

**Additional Attachments:** Staff Report, Planning Commission Minutes

# Resolution No. 2020-47

## James Rutledge

### Special Use Permit – Agriculturally Related Business

Staff Report – Board of County Commissioners

December 2, 2020

---

#### GENERAL INFORMATION:

**Applicant/  
Property Owner:** James Rutledge  
23961 211<sup>th</sup> Street  
Leavenworth, KS 66048

**Legal Description:** A tract of land in the Southern half of the Northeast quarter of Section 4, Township 10 South, Range 21 East of the 6<sup>th</sup> P.M, in Leavenworth County, Kansas.

**Parcel Size:** ± 99 acres

**Zoning/Land Use:** RR-5, Rural Residential 5-acre minimum size parcels

**Comprehensive Plan:** This parcel is within the Agricultural Preserve land use category.

**Parcel ID No.:** 142-04-0-00-01-013.00

**Planner:** Jared Clements

---

#### STAFF RECOMMENDATION:

The Planning Commissioner voted 6-0 to recommend approval of Case No.DEV-20-104 (Resolution No. 2020-47), Special Use Permit for James Rutledge’s Agriculturally-Related business with the following conditions:

1. The SUP shall be limited to a period of five (5) years.
2. The business shall be limited to the hours of 6 am to 7 pm, Monday through Sunday
3. The applicant shall pay a Traffic Impact Fee (TIF) of \$51.56.
4. The SUP shall limit both renters from having employees.
5. The applicant shall adhere to the following memorandums:
  - a. Mitch Pleak – Public Works, November 4, 2020
6. No signage is allowed in the right-of-way. No signage is requested with the SUP. All signage shall comply with Article 25, Sign Regulations of the Leavenworth County Zoning and Subdivision Regulations.
7. No on-street parking shall be allowed.
8. This SUP shall be limited to the Narrative dated August 25, 2020 submitted with this application.
9. This SUP shall comply with all local, state, and federal rules and regulations that may be applicable. After approval of this SUP by the Board of County Commission all conditions listed shall be adhered to and copies shall be provided to the Planning and Zoning Department within 30 days.

#### Request

The applicant is requesting a Special Use Permit for an agriculturally-related business. Specifically, the applicant wishes to continue maintain the rental agreements of his two barns.

#### Adjacent Land Use

The surrounding properties are residences and farms on varying sized parcels ranging from 1 acre to over 140 acres in size.

### **Flood Plain**

There are no Special Flood Hazard Areas on this parcel per FEMA Firm Map 20103C0225G July 16, 2015.

### **Utilities/Services**

Sewer: Private septic system  
Fire: Alexandria  
Water: RWD 8  
Electric: Evergy

### **Access/Streets**

The property is accessed by 211<sup>th</sup> Street, a County Arterial with a paved surface ± 22' wide.

### **Agency Comments**

See attached comments – Email – Kyle Anderson – Planning and Zoning, September 18, 2020  
See attached comments – Email – Mitch Pleak – Public Works, November 4, 2020  
See attached comments – Email – David Van Parys – County Counselor, Month day, 2020  
See attached comments – Email – Tony Burr – Alexandria Fire Department, September 15, 2020  
See attached comments – Email – Tyler Rebel – Evergy, September 14, 2020

### **Factors to be considered**

The following factors are to be considered by the Planning Commission and the Board of County Commission when approving or disapproving this Special Use Permit request:

1. Character of the neighborhood: The character of the neighborhood is rural; primarily rural residences, and agricultural uses.
2. Zoning and uses of nearby property: The surrounding properties are zoned RR-5, Rural Residential 5-acre minimum size parcels. The uses are rural residences and agricultural.
3. Suitability of the property for the uses to which it has been restricted: The property is within an area suited for rural residences and agricultural use. The use is allowed with approval of a Special Use Permit
4. Extent to which removal of the restrictions will detrimentally affect nearby property: The area will not likely be detrimentally affected, as this arrangement has been in place for numerous years. The impacts this use has on surrounding properties is limited to the occasional departure and arrival of the tenants.
5. Length of time the property has been vacant as zoned: The property is not vacant.
6. Relative gain to economic development, public health, safety and welfare: The proposed use will continue to provide income to the applicant and rental space for his tenants.
7. Conformance to the Comprehensive Plan: The Future Land Use Map indicates this area as Agricultural Preserve.
8. Staff recommendation is for the approval of Special Use Permit with conditions.

### **Staff Comments**

The applicant in this case is seeking a special use permit to conditionally allow the rental agreements of two barns on his property for storage purposes. The southernmost barn, herein referred to as the lower barn, is used by a long-haul trucker who uses to the building to store his vehicles and trailers. He comes to the property approximately 1 time per month. The upper barn is used as an automotive hobby shop, where the tenant works on and stores his personal vehicles. He comes to the property approximately 3 times per week. From our office's understanding this arrangement has been in place for several years, with the applicant unaware that such an arrangement needed to be permitted. Our office discovered the rental arrangement during the review process of a building permit application for Mr. Rutledge. Upon being notified of the need for a Special Use Permit, Mr. Rutledge applied.

As was noted in the attached memo from the Public Works department, the route provided by the applicant is on a county route that does not allow for commercial vehicles in excess of 24,000 pounds, per Resolution 2009-50 (attached). This resolution also provides that the Board of County Commissioners have the authority to allow commercial vehicles to travel on such routes. Additionally, the resolution states that commercial vehicles may be allowed if a point of origin or destination is on such a route.

<b>LOCATION</b>	
<b>Adjacent Residences</b>	Adjacent residences are rural-suburban uses. Most surrounding properties are over 5 acres in size.
<b>Adjacent Zoning/Uses</b>	Zoning in the area is RR-5 and are used primarily as rural residences and agricultural uses.
<b>Density</b>	The area is not densely populated.
<b>Nearby City Limits</b>	The city of Tonganoxie is approximately 5.5 miles to the South of the property.
<b>Initial Growth Management Area</b>	The property is not located within an Urban Growth Management Area.

<b>IMPACT</b>	
<b>Noise Pollution</b>	This use will not cause prolonged noise pollution, as the only equipment that could produce noise would be the truck arriving and departing, as well as an impact drill.
<b>Traffic</b>	The tenant of the center building is said to be there 3-4 times per week on average. The tenant with the trucking business in the southern building makes 1-2 trips per month.
<b>Lighting</b>	The applicant does not have lighting other than security lighting and is not requesting lighting.
<b>Outdoor Storage</b>	The applicant's tenant stores 3 truck and a trailer outside near an existing shop.
<b>Parking</b>	The applicant has ample parking space the intended use.
<b>Visitors/Employees</b>	The two uses of the barns will not require visitors or employees.
<b>Waste</b>	Each out building has a dumpster near it for any waste that is produced by the uses. These dumpsters are emptied on a monthly basis.

<b>SITE COMPATABILITY</b>	
<b>Size of Parcel</b>	The parcel is ninety-nine (99) acres in size.
<b>Zoning of Parcel</b>	The parcel is zoned Rural Residential-5
<b>Buildings (Existing &amp; Proposed)</b>	The applicant has two out buildings on the property. The southern building, used for truck storage is 60'x100'. The other building, used as a hobby shop, is 70' x 140'.
<b>Setbacks</b>	Existing building meet the required setbacks.
<b>Screening</b>	The property has no screening and is visible from the roadway. It is well-maintained & clean.

**ACTION OPTIONS:**

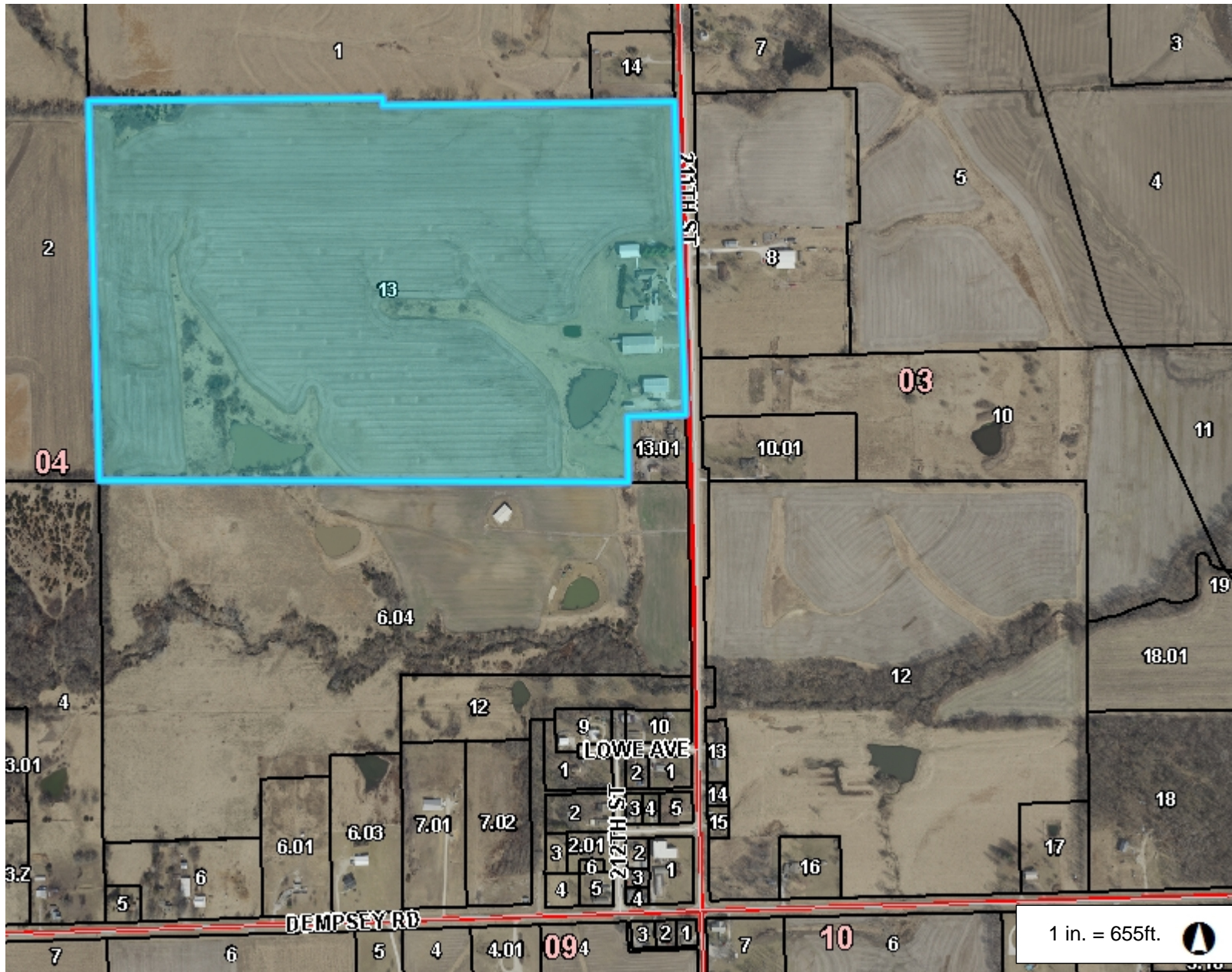
1. Approve Resolution 2020-47, Special Use Permit for James Rutledge's Agriculturally-Related Business, with Findings of Fact, and with or without conditions; or
2. Deny Resolution 2020-47, Special Use Permit for James Rutledge's Agriculturally-Related Business, with Findings of Fact; or
3. Revise or Modify the Planning Commission Recommendation to Resolution 2020-47, Special Use Permit for James Rutledge's Agriculturally-Related Business, with Findings of Fact; or
4. Continue to another date, time, and place; or
5. Remand the case back to the Planning Commission.

**ATTACHMENTS:**

Narrative  
 Location/Aerial Maps  
 Memorandums



# Leavenworth County, KS



## Legend

- Parcel Number
- Parcel
- City Limit Line
- Major Road
  - <all other values>
  - 70
- Road
- Railroad
- Section
- Section Boundaries
- County Boundary

## Notes

This Cadastral Map is for informational purposes only. It does not purport to represent a property boundary survey of the parcels shown and shall not be used for conveyances or the establishment of property boundaries.  
THIS MAP IS NOT TO BE USED FOR NAVIGATION

1,310.4      0      655.18      1,310.4 Feet

Aug 21-2020

I, Jim Rutledge rent of  
these two shops, one shop,  
the man parks truck, the other  
shop, is a toy shop, work on  
his hot rod truck and car.

Jim Rutledge  
913-250-0004





Leavenworth County  
Planning & Zoning Department  
300 Walnut, Suite 212  
Leavenworth, Kansas 66048

---

**To:** Krystal Voth  
Director

**From:** Kyle Anderson  
Environmental Tech/Code Enforcement

**Date:** September 18, 2020

**RE:** James Rutledge  
Rental Buildings  
**Case DEV-20-104, Special Use Permit**  
23961 211<sup>th</sup> St  
Leavenworth, KS 66048  
PID# 142-04-0-00-01-013.00

Our department received the application for a Special Use Permit for two rental buildings 08/25/2020, located at the above listed location.

To date, I have not received any complaints on the property. Mr. Rutledge turned in a building permit application, and in the review process the rental business was discovered. We also found that there were too many dwellings on the property which is being taken care of with a tract split that will be submitted for a future meeting.

Thank you,

Kyle Anderson  
[kanderson@leavenworthcounty.gov](mailto:kanderson@leavenworthcounty.gov)

**From:** [Voth, Krystal](#)  
**Sent:** Thursday, November 5, 2020 3:06 PM  
**To:** [Clements, Jared](#)  
**Subject:** FW: Rutledge SUP Information

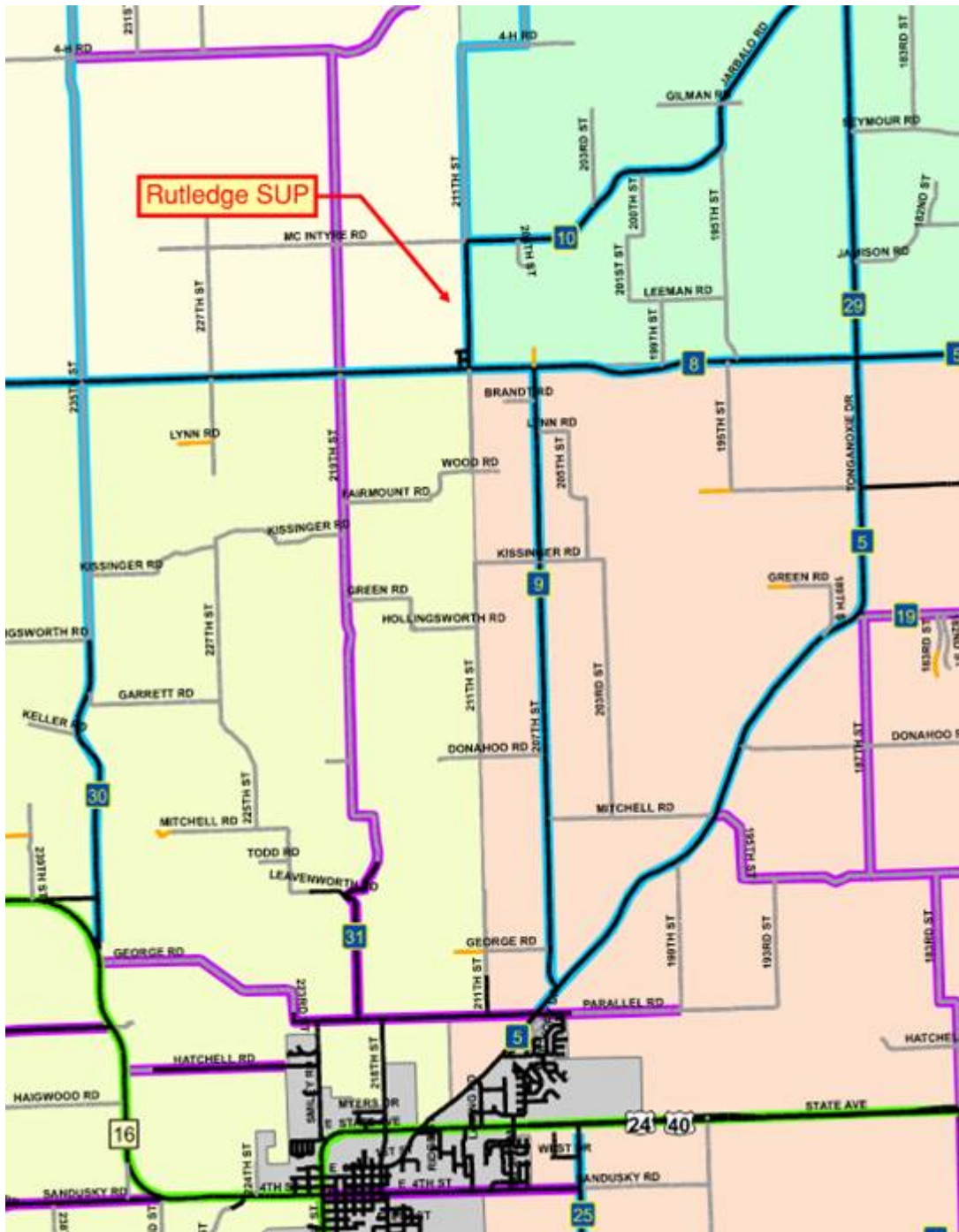
---

---

**From:** Mitch Pleak  
**Sent:** Thursday, November 5, 2020 2:46 PM  
**To:** Voth, Krystal  
**Cc:** Anderson, Lauren ; Noll, Bill ; 019-2831 <019-2831@olsson.com>  
**Subject:** FW: Rutledge SUP Information

**Notice:** This email originated from outside this organization. Do not click on links or open attachments unless you trust the sender and know the content is safe.

Krystal,  
The route provided by the applicant appears to be on County routes that don't allow commercial vehicles in excess of 24,000 lbs per Res. 2009-50 unless there is consent from the BOCC (4.d of the resolution). The roads within the said route are unknown to support or convey tractor trailers. It is recommended the applicant provide engineering documentation supporting the route being safe for tractor trailers. This is a measurable effort. The applicant may not be aware of such resolution. It might be helpful to inform the applicant of this. If the applicant is still interested in moving forward, we can provide a path forward.



Thanks,

**Mitch Pleak, PE**  
Project Engineer / Civil

D 913.748.2503

7301 W. 133rd Street, Suite 200  
Overland Park, KS 66213

O 913.381.1170



Follow Us: [Facebook](#) / [Twitter](#) / [Instagram](#) / [LinkedIn](#) / [YouTube](#)

[View Legal Disclaimer](#)

---

**From:** Clements, Jared <[JClements@leavenworthcounty.gov](mailto:JClements@leavenworthcounty.gov)>

**Sent:** Wednesday, September 30, 2020 10:23 AM

**To:** Mitch Pleak <[mpleak@olsson.com](mailto:mpleak@olsson.com)>

**Subject:** Rutledge SUP Information

Hey Mitch,

The route taken by the truck driver from Mr. Rutledge's house is as follows:

When leaving the truck driver takes a right out of the driveway heading South on 211<sup>th</sup>. Then East on Dempsey and South on 207<sup>th</sup> to Tonganoxie Drive, where his route is then subject to change depending on destination.

This is the information I have been able to gather thus far, let me know if you need more concerning the route.

Thanks,

Jared Clements  
Planner I  
Leavenworth County Planning and Zoning  
300 Walnut St. Ste. 212  
Leavenworth, KS 66048  
(913)684-0465

RESOLUTION 2009 - 50

**A RESOLUTION OF THE BOARD OF COUNTY COMMISSIONERS OF LEAVENWORTH COUNTY, KANSAS, PROHIBITING THE USE OF CERTAIN ROADWAYS UNDER THE JURISDICTION AND CONTROL OF THE BOARD BY COMMERCIAL VEHICLES; SETTING FORTH EXCEPTIONS TO SAID PROHIBITION; PROVIDING FOR VIOLATIONS OF THIS RESOLUTION; REPEALING RESOLUTION 2004-57**

**WHEREAS**, It has been determined by the Board of County Commissioners of Leavenworth County, Kansas, that the use of certain roadways under the jurisdiction and control of the Board as thoroughfares by commercial vehicles is incompatible with the normal and safe movement of said commercial vehicles; and

**WHEREAS**, the Board has determined that the use of certain roadways under the jurisdiction and control of the Board as thoroughfares by commercial vehicles should be regulated and, with certain exceptions, proscribed; and

**WHEREAS**, the provisions of K.S.A. 8-1912(c) authorizes the Board to restrict and regulate the operation of commercial vehicles upon roads under the jurisdiction and control of the Board;

**NOW, THEREFORE, BE IT RESOLVED:**

1. That for the purpose of this resolutions "commercial vehicle" means any motor vehicle, other than a passenger vehicle, and any trailer, semitrailer or pole trailer drawn by such motor vehicle, which vehicle is designed, used and maintained for hire, compensation, profit, or in the furtherance of commercial enterprise. This designation shall apply to all vehicles in excess of 24,000 lbs. in Gross Vehicle Weight (GVW). "Commercial vehicle" shall not include any motor vehicle or motorized equipment used for agricultural purposes. "Commercial vehicle" shall not include any motor vehicle used exclusively for the purpose of transporting students to school or any school sanctioned event.
2. Except as herein provided it shall be a violation of this resolution for any commercial vehicle to use any road under the jurisdiction and control of the Board which has been posted and signed as being subject to this resolution.
3. Roads restricted by this resolution include, but are not limited to the following known as:
  - a. Route numbers: 1 (K-32 south to Eudora), 2, 3, 4, 5, 6, 7, 8, 9, 10, 11, 12, 13, 14, 17, 18, 20, 21, 22, 24, 25, 26, 27, 29, 31, 32, 33, 34, and 36.
  - b. Kansas Avenue between Route 2 and 142<sup>nd</sup> Street
  - c. 147<sup>th</sup> Street between Route 8 and Dempsey Road
  - d. Parallel between 222<sup>nd</sup> Street and Route 5
  - e. 155<sup>th</sup> Street between Route #7 and Eisenhower Road
  - f. Gillman between 136<sup>th</sup> Street and 127<sup>th</sup> Street (East of the City Limits of Lansing)
  - g. Any and all roadways properly signed in accordance with item #6 below
4. Commercial vehicles shall be allowed to operation upon roads posted and signed as being subject to this resolution under the following circumstances:
  - a. That the commercial vehicle had either a point of origin or destination upon the road
  - b. That the commercial vehicle had a point of destination which could not lawfully be reached without travel upon the road.
  - c. That the road was posted as a detour route for any County road upon which commercial vehicle traffic was permitted.
  - d. That the commercial vehicle traveled upon the road at the consent of the Board through the issuance of a temporary haul permit.



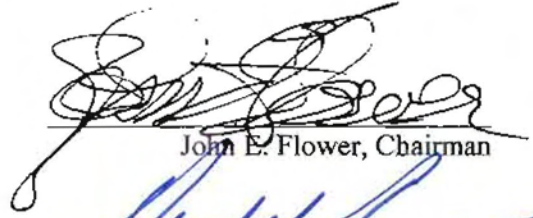
5. That the violation of this resolution shall be classified as a Class C Misdemeanor. Each violation shall constitute a separate offence. Persons cited for any violation of this resolution shall be issued a citation to appear before the District Court to answer for the charge of having violated the provisions of this resolution.

6. The Public Works department shall place traffic signs giving notice of this regulation at appropriate entrances to said roadways. The use of prohibited truck traffic signs is authorized on all roadways restricted under this resolution, with sign placement under the discretion of the County Engineer.

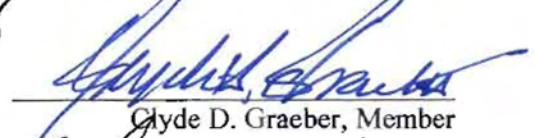
7. County Route #1 between K-32 and US 24/40 shall be designated as a truck route to allow access to the Kansas Turnpike at I-70 exit 212.

8. That Resolution 2004-57 and any prior resolution prohibiting commercial vehicles on County roads is here by repealed.

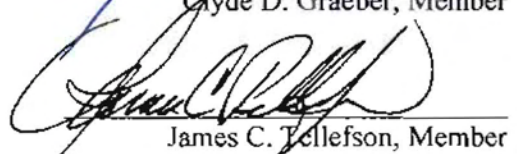
RESOLVED THIS 15 DAY OF OCTOBER, 2009



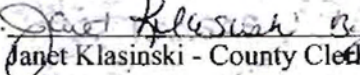
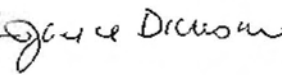
John E. Flower, Chairman



Clyde D. Graeber, Member



James C. Tellefson, Member

ATTEST    
Janet Klasinski - County Clerk





## RESOLUTION 2020-47

A resolution of the Leavenworth County Kansas Board of County Commission, issuing a Special Use Permit for an agriculturally-related business on the following described property:

A tract of land in the Southern half of the Northeast quarter of Section 4, Township 10 South, Range 21 East of the 6<sup>th</sup> P.M, in Leavenworth County, Kansas. Also known as 23961 211<sup>th</sup> Street.

WHEREAS, it is hereby found and determined that a request for a Special Use Permit as described above was filed with the Secretary of the Leavenworth County Planning Commission, on the 26<sup>th</sup> day of August, 2020, and

WHEREAS, it is hereby found that the Leavenworth County Planning Commission, after notice as required by law, did conduct a public hearing upon the granting of such request for a Special Use Permit on the 12<sup>th</sup> day of November, 2020; and

WHEREAS, it is hereby found that the Leavenworth County Planning Commission, based upon specific findings of fact incorporated by reference herein, did recommend that the Special Use Permit be approved, subject to special conditions as set forth; and

WHEREAS, the Board of County Commission considered, in session on the 2<sup>nd</sup> day of December, 2020, the recommendation of the Leavenworth County Planning Commission.

NOW, THEREFORE, BE IT RESOLVED by the Board of County Commission of Leavenworth County, Kansas, that:

1. Based upon the recommendation and findings of fact of the Leavenworth County Planning Commission; and,
2. Based upon the findings of fact adopted by the Board of County Commission in regular session on the 2<sup>nd</sup> day of December, 2020, and incorporated herein by reference;

That Case No. DEV-20-104, Special Use Permit for an agriculturally-related business approved subject to the following conditions:

1. The SUP shall be limited to a period of five (5) years.
2. The business shall be limited to the hours of 6 am to 7 pm, Monday through Sunday
3. The applicant shall pay a Traffic Impact Fee (TIF) of \$51.56.
4. The SUP shall be limit both renters to have no employees.
5. The applicant shall adhere to the following memorandums:
  - a. Mitch Pleak – Public Works, November 4, 2020
6. No signage is allowed in the right-of-way. No signage is requested with the SUP. All signage shall comply with Article 25, Sign Regulations of the Leavenworth County Zoning and Subdivision Regulations.
7. No on-street parking shall be allowed.
8. This SUP shall be limited to the Narrative dated August 25, 2020 submitted with this application.

9. This SUP shall comply with all local, state, and federal rules and regulations that may be applicable. After approval of this SUP by the Board of County Commission all conditions listed shall be adhered to and copies shall be provided to the Planning and Zoning Department within 30 days.

Located in Section 4, Township 10 South, Range 21, also known as 23961 211<sup>th</sup> Street, parcel no. 142-04-0-00-01-013.00 in Leavenworth County, Kansas.

Adopted this 2<sup>nd</sup> day of December, 2020  
Board of County Commission  
Leavenworth, County, Kansas

\_\_\_\_\_  
Doug Smith, Chairman

ATTEST

\_\_\_\_\_  
Jeff Culbertson, Member

\_\_\_\_\_  
Janet Klasinski

\_\_\_\_\_  
Vicky Kaaz, Member

\_\_\_\_\_  
Chad Schimke, Member

\_\_\_\_\_  
Mike Stieben, Member

# Leavenworth County Request for Board Action

Date: November 11, 2020

To: Board of County Commissioners

Department Head Approval: *B. Noll*

**Additional Reviews as needed:**

Budget Review  Administrator Review  Legal Review

---

---

**Action Requested:** Consider the acceptance of the proposal by ARUP to conduct a feasibility study for the Eastern Gateway Bridge.

**Analysis:** This study is the primary keystone that will determine the viability of the Eastern Gateway project as a public-private partnership. It will establish the level of funding that may be available for the project from the private sector and what portion of the project would have to be publically funded. Arup is an independently operated investment design group with years of national and international experience in this arena. They are familiar with our geographic region from their investments as a private partner in the KCI Single Terminal Project. The proposed study has an 8 week timeline and has not-to-exceed cost of \$100,000.

Momentum on projects, especially those as substantial as this, is hard to generate. At this time the project has interest and has private sector interest. I can reach out at any time in the future for more proposals and interest but it cannot be guaranteed interest will still be held by the private sector.

**Alternatives:** Table, Deny, Approve

**Budgetary Impact:**

- Not Applicable
- Budgeted item with available funds
- Non-Budgeted item with available funds through prioritization
- Non-Budgeted item with additional funds requested

**Total Amount Required if Approved: \$100,000**

**Additional Attachments:**

Feasibility study proposal provided by Arup.



Leavenworth County Department of Public Works  
**Proposal in respect of the Feasibility of the Eastern Gateway Concept P3**

October 8, 2020

Bill Noll,  
Infrastructure and Construction Services Director  
100 N 5th St, Leavenworth, KS 66048  
Leavenworth,  
KS 66048

October 8, 2020

**Eastern Gateway Concept P3 Feasibility Study**

Dear Bill,

It was a pleasure to speak with you last week and, further to our discussion, we are delighted to present our proposal in relation to preparing a feasibility study with a particular focus on P3 procurement, for the delivery of the Eastern Gateway Concept (the "Project").

Arup is a wholly independent organization owned in trust on behalf of its staff. With no external shareholders, creditors, or affiliated businesses, this independence enables us to focus exclusively on what is best for our clients and without conflicts of interest.

Arup offers integrated financial, technical and commercial expertise in the P3 space which we will bring to bear in this first stage in order to validate the P3 concept. We work as a seamless team combining industry knowledge and expertise from our specialists across the Americas region and globally.

Notable projects in the P3 space in which Arup has had a leading role include the Presidio Parkway in San Francisco, the Long Beach Civic Center and a recent feasibility study for a P3 flood defense program.

We have identified an experienced team for this assignment, composed of financial, commercial and technical specialists including those focused on the bridges and highways sector and with experience on projects across jurisdictions. Moreover, the team we have assembled for this project brings forth relevant local experience having worked with the City of Wichita to assess a potential P3 structure for the Wichita Convention Center and Performing Arts. Arup is currently engaged on the Kansas City Airport, Terminal A project with our scope including airfield planning, ITC and security design.

We very much look forward to discussing this important project with you.

With kind regards,



Tim Treharne, Principal, Advisory Services



**Tim Treharne**  
Advisory Services Leader, New York

**t** +1 212-897-1446  
**m** +1 347 899 0011  
**e** tim.treharne@arup.com

77 Water Street  
New York, NY, 10005  
www.arup.com

# Our Organization

## Our Organization

Delivering an integrated solution

# ARUP

- Arup is one of the world's leading engineering and consultancy practices, providing professional services in all areas of the built and natural environment. We aim to help our clients meet their needs by adding value through commercial and financial structuring, technical excellence, efficient organization and procurement. Throughout the world we aim to provide a consistently excellent multi-disciplinary service, which also incorporates our concern for the environment.
- Arup was established in London in 1946. Today, Arup is one of the largest and most successful global consultancies in the world with over 14,000 staff operating in 88 offices and 33 countries. The firm enjoys total financial independence and has a turnover in excess of US\$2.2 billion. The firm is held in trust for the benefit of its employees and their dependents.
- Arup is an experienced advisor with particular expertise in both the structuring and procurement of P3 projects across a range of sectors including transport and highways.

### Our Approach

- By bringing together technical, commercial and financial market issues we enable our clients to develop structures and tendering strategies to obtain best value for money.
- As a leading global Advisor, we assist our clients throughout the asset lifecycle from procurement through financial close and construction to the end of operations. We leverage our global experience and knowledge to apply to the local context.
- Arup understands the complexity of public private partnerships from experience in a wealth of projects across the US and beyond.



2020

Shortlisted: Financial Advisor of the Year  
Shortlisted: Technical Advisor of the Year

2019

Shortlisted: Financial Advisor of the Year  
Shortlisted: Technical Advisor of the Year

2018

Shortlisted: Financial Advisor of the Year  
Shortlisted: Technical Advisor of the Year



2019

North America Technical Advisor of the Year  
Latin America & Europe Technical Advisor of the Year

2018

North America Technical Advisor of the Year  
Europe & Africa Technical Advisor of the Year





## Our Team

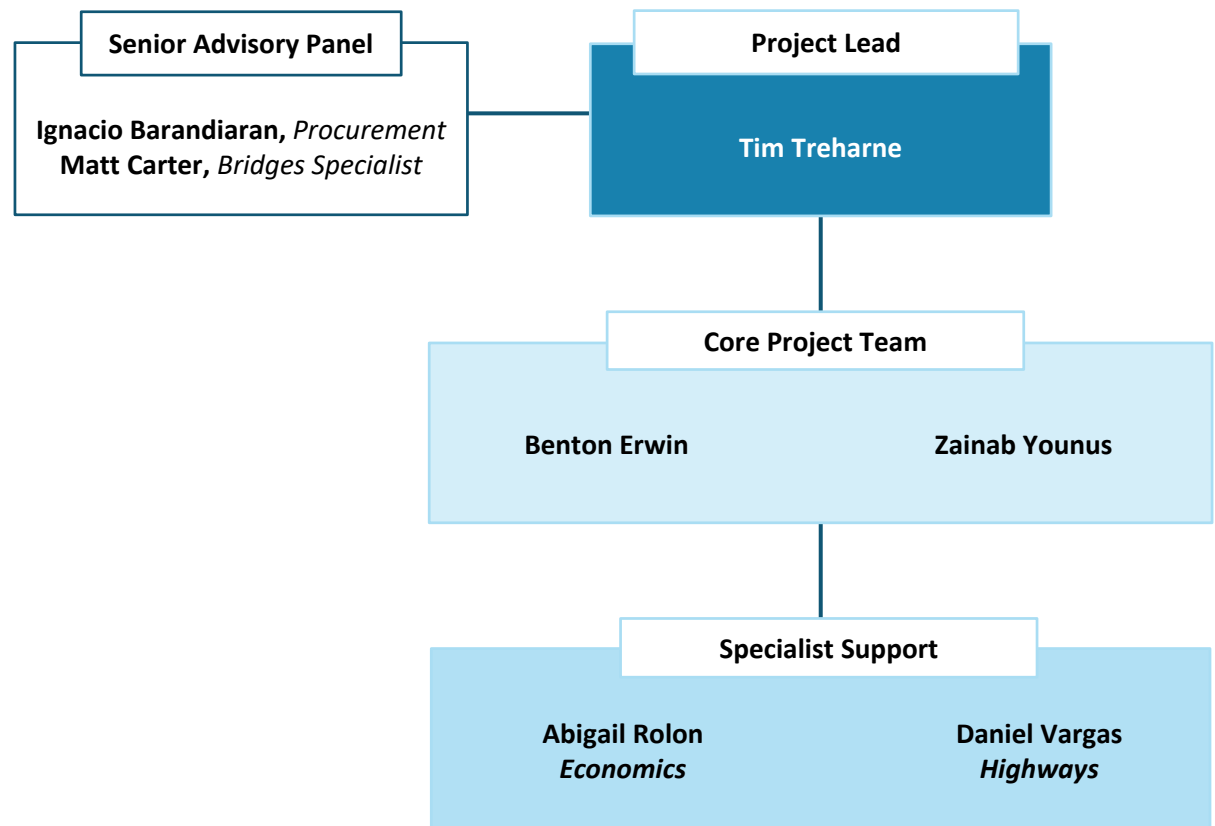
Arup offers a team of experienced individuals to assist you in this project.

At Arup we believe in working as an integrated team involving significant iterative client interactions. You will therefore find that we take a proactive approach and will get fully involved with your team to deliver the required deliverables at the initial stage and beyond.

**Tim Treharne** will have overall responsibility for the delivery of the project, coordinating the inputs of specialists to deliver the required outputs supported by a core project team and a senior consultation panel.

Our advisory panel includes a procurement specialist, **Ignacio Barandiaran** who brings relevant local experience in Kansas. Additionally, **Matt Carter** will serve as a bridges specialist. The integration of the technical considerations with the financial allows for holistic advise.

The team structure represents a highly skilled staff selected based on transaction requirements. Key team members are highlighted in the chart opposite, with supporting profiles provided in the following pages.



## Our Team

### Project Lead and Senior Advisory Panel



**Tim Treharne**  
Project Lead

Tim is a Principal at Arup's New York Office with extensive experience in the development of public private partnership programs and projects. Having been a lender, adviser (both public and private side) and an investor in this area, Tim has a 360 degree view of the market and has advised numerous public authorities on the development of their programs and projects in the US, Europe and South America.

Tim's previous roles have included being Head of Global Infrastructure for Bank of America, Senior Director at KPMG Global Infrastructure and most recently as European Chief Operating Officer for Meridiam.

His specialties include project finance, PFI, PPP, P3 and privatizations. Tim brings a depth of market knowledge in structuring alternative delivery models for public clients including for multi-jurisdictional projects.



**Ignacio Barandiaran**  
Procurement Specialist, Advisory Panel

Ignacio Barandiaran is a Principal at Arup's San Francisco, CA office and is a member of Arup's Board of Directors in the Americas region. He heads Arup's Transaction Advice business in North and South America, leading a team of financial and technical infrastructure specialists delivering economics and strategy advice, management consulting, due diligence, and financial advice. He has extensive knowledge of alternative funding and delivery models and the project and municipal finance markets. Ignacio works with public sponsors/agencies, equity providers, concession companies, contractors, rating agencies, and lenders. He has advised his clients on transportation and social infrastructure projects.

Ignacio's expertise has provided a notable impact to a variety of projects in the US and abroad. Within the last eight years Ignacio has undertaken over sixty infrastructure advisory assignments representing over \$60 Billion in aggregate project value. These include pathfinder projects such as the Texas High Speed Rail, Long Beach Civic Center, and the Presidio Parkway. Ignacio is currently advising the City of Denver on the development of a policy and organizational structure to support a program of innovative delivery and financing projects across the city



**Matt Carter**  
Bridges Specialist, Advisory Panel

Matt Carter is a Principal in the New York office. He has extensive experience of the conceptual and detailed design of long span and complex bridge structures in North America, East Asia, Europe, Africa and Australia.

Matt has been involved in numerous design-build projects and public private partnerships with both owners and contractors as clients, gaining unique insights by working from different perspectives.

Notable projects include major cable stayed bridges such as the New Bridge for the St Lawrence in Montreal. Matt's long span bridge experience also includes design of suspension bridges and he has experience of major precast post-tensioned concrete viaduct projects both on land and over sea.

Matt's project experience includes the Tappan Zee Bridge replacement, which was procured on a design-build basis with Arup acting as the owner's engineer. He also served as the Bridges Lead for the New Bridge for St Lawrence, Montreal, QC project, developing the business case for replacing an ageing urban bridge on a Public-Private-Partnership basis.

## Our Team

### Core Team Members and Specialist Support



**Benton Erwin**  
Associate

Benton works as a project manager with Arup's Transaction Advice group. Benton is a leading consultant for Public Private Partnership and general project finance advisory.

His project experience includes serving as the Project Manager for the Indiana Toll Road sell-side due diligence as well as for IFM's acquisition of OHL Concesiones portfolio. Benton also advised on the recent Puerto Rico highway M&A process.

Benton has extensive experience supporting governments, sponsors and lenders to navigate project development from inception through financial close and into the construction and operations phases. Benton has advised on over 30 project finance deals with experience throughout the Americas and primarily in the transportation and energy sectors.

Benton joined Arup in April, 2013 upon the completion of his Sustainable Design and Construction master's degree from Stanford University where he focused on infrastructure project delivery, construction management, and project finance.



**Zainab Younus**  
Analyst

Zainab Younus is an Analyst with Arup's Advisory Services team based in New York. She advises owners and investors on infrastructure projects from a variety of perspectives.

At Arup, she has worked on projects across a range of different sectors including transportation.

Her project experience includes completing the commercial review of various assets ranging from the energy sector to telecom. She has also conducted business plan review for various asset classes on technical engagements.

Zainab has worked on various delivery options analysis and feasibility studies. Recently, she worked on a resiliency projects related feasibility study, assessing whether a P3 structure would be a viable option to deliver the project. She led the financial analysis and model development to assess the financial and commercial structure.

Prior to joining Arup, Zainab was an Industrials Investment Banking Analyst focusing on the Transportation and Logistics vertical, covering various trucking, shipping, rail and logistics clients.



**Abigail Rolon**  
Associate

Abigail has 15 years of international experience conducting economic evaluations and financial analysis of public, private, and public-private investments. Abigail's specific skills include the ability to manage complex projects, perform benefit cost analysis of infrastructure projects, develop macroeconomic forecasts for traffic and revenue studies in the transportation sector, communicate and negotiate effectively, and handle multiple tasks and assignments in a fast-paced environment.

Abigail was a member of the team for the Wichita Convention Center and Performing Arts feasibility study. She has also worked on the Presidio Parkway P3 project, completing the benefit-cost analysis. Moreover, as part of the technical due diligence for a road safety improvement plan to be executed by the City of Buenos Aires, Argentina and supported by a loan from the Inter-American Development Bank, Abigail led the economic evaluation of the proposed road safety improvements

Before joining Arup Abigail worked at a transportation consulting firm developing funding strategies to finance transportation investments at state and local levels, and performing quantitative analysis of transportation investments using benefit-cost methodology and economic impact analysis.



**Daniel Vargas**  
Senior Consultant

Daniel Vargas is a Transaction Advice Project Manager in Arup's San Francisco Office. He is responsible for supporting a wide range of owners and investors in increasing certainty of outcome of project delivery. His background includes professional experience in multiple phases of EPC projects, including holding responsibilities in Procurement and Construction Management for mega projects.

Prior to joining Arup, Daniel was the Productivity and Performance Manager for one of the world's largest contractors where he was deployed on a \$6 billion petrochemical complex in Pennsylvania. Daniel is a Six Sigma Black Belt and has led engagements in a variety of process improvement efforts. He has developed multiple business intelligence tools for effective decision making and championed the deployed of a variety of technologies to improve construction safety, quality and performance.

Daniel holds a BSc in Architectural Engineering and an MSc in Civil Engineering from the University of Texas at Austin. Daniel is fluent in English and Spanish.



## Project Understanding

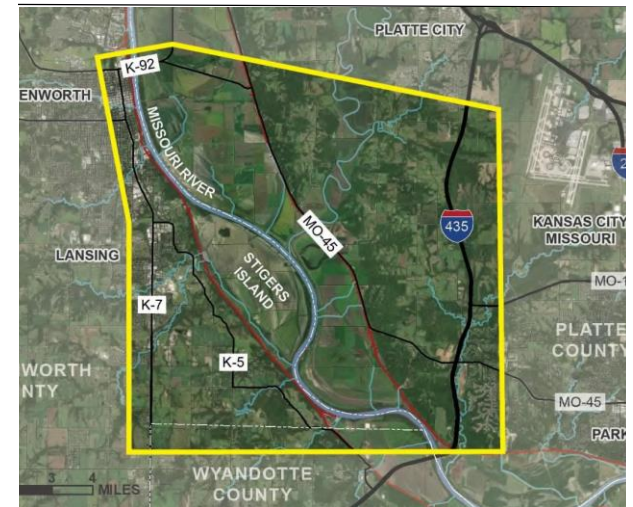
### Our Understanding

Arup understands that the Leavenworth County commissioned a study aimed to (i) assess and evaluate up to three potential connections between Kansas 7 Highway and I-435 including connections to Missouri Route 152 and Missouri Route 45, (ii) develop preliminary cost estimates and (iii) develop preliminary traffic volumes. We understand that TranSystems was awarded the contract to complete the study.

Currently, there is limited bi-state connectivity within the County; travel time to the Kansas City metropolitan area is significant. The Eastern Gateway Project, a potential bridge / roadway, aims to increase connectivity across the Missouri River.

Having completed a preliminary technical feasibility study, the County is interested in evaluating the financial feasibility of the Project, particularly if the Project may be procured through a private-public-partnership (“P3”) structure. Given the

recent changes in the law allowing for road tolling, there is an interest from County officials to assess whether the project may be funded through the tolls the Project earns. Moreover, the County is also interested in understanding potential market interest from private partners.



#### Study Area

Source: TranSystems Eastern Gateway Concept Study\_Final Report

## Approach

Our approach is described below

### Review of the County's Objectives

As a preliminary to any procurement, establishing the procuring authority's short and long-term objectives. We will highlight the possible P3 structures available in that context and consider risk transfer and value for money.

To identify the most appropriate scenarios and to effectively assess the risks associated with each option, it is important to set out a clear set of prioritized financial and non-financial objectives for the procuring authority.

We will meet (virtually) with you to assess technical work project goals and constraints, technical challenges and risks, stakeholder issues, political landscape, public concerns, and opportunities for private sector technical innovation.

### Review Delivery and Funding Options

We will consider the feasibility of the project as a P3, and will liaise with:

1. Your legal counsel in relation to the current legislative framework and highlight any needs including for a bi-state agreement; and
2. Your technical adviser in terms of traffic and revenue and project cost assumptions as well as the program for environmental approvals.

We will construct a bespoke financial model for the project which will incorporate the assumptions mentioned above to evaluate the extent to which the project will be able to fund itself through tolls.

We will develop a high level project terms sheet that would be suitable for P3 delivery along with a report of findings and action plan.

### Market Sounding

The Arup team has extensive experience conducting market soundings and is very familiar with the various market participants.

We conduct structured interviews with the various market participants including contractors, investors and investor developers.

This process typically starts with a project specific questionnaire, prefaced by a short description of the project. This process is designed to validate our conclusions as well as to start mapping potential bidders.

We will also consider the likely timeline for P3 procurement.

## Scope of work

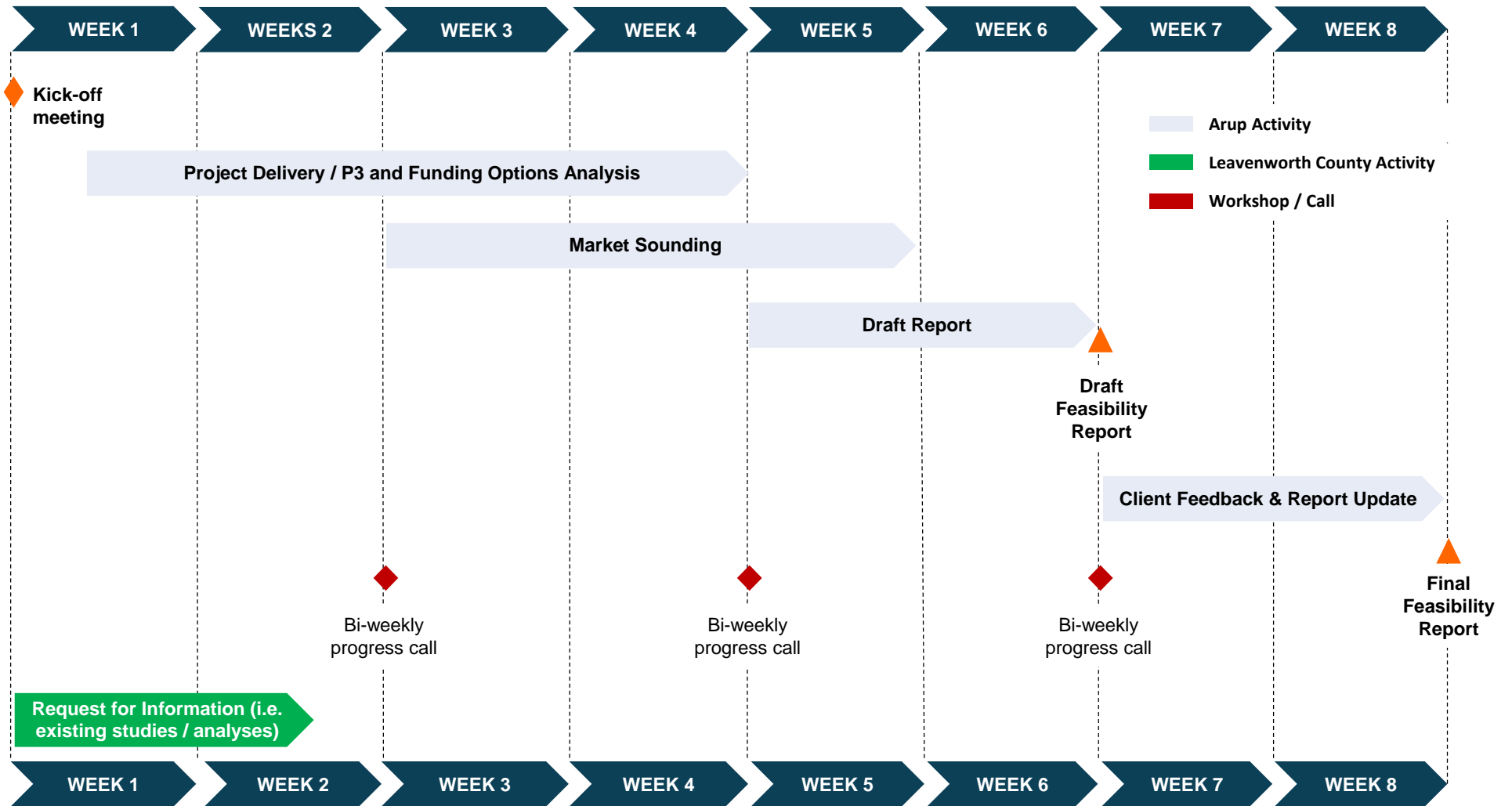
### Detailed scope of work for reviewing the options

	Task
<b>Project Kick-off</b>	We will conduct a workshop call with you aimed to (i) review and establish the County's short and long-term objectives, (ii) project objectives, (iii) risk appetite, and (iv) review of work conducted by the County thus far, including cost and traffic estimates. This information will help inform our analysis of potential commercial structures. Moreover, during the kickoff call, we hope to review and finalize the work plan and scope with you as well as confirm availability of key County resources including identifying the County's advisors on the project including legal advisor, with whom we will liaise with regarding legal framework matters and technical adviser with whom we will liaise regarding traffic & revenue and cost assumptions as well as environmental process.
<b>Project Delivery and Funding Options Analysis</b>	<p>We will conduct a qualitative review of the delivery options, including P3s, available to the County under the existing legislation. We will also conduct a quantitative analysis of the delivery options by constructing a bespoke financial model for the project to evaluate the cost to the County of procuring the project through a P3 structure.</p> <p>We will request certain inputs and assumptions from the County for our financial model analysis, including, but not limited to, preliminary cost and traffic &amp; revenue estimates.</p>
<b>Market Sounding</b>	<p>Prior to the interviews, we will prepare for the County's approval the topics for discussion and a series of base questions. The main objective of the market sounding is to confirm/validate certain commercial and financial assumptions, such as preliminary capital structure or key terms and conditions. This feedback will be taken into account in the commercial and financial analysis of the options and in the development of the eventual procurement documents. The findings and conclusions are extremely valuable to better shape the procurement strategy, schedule, and risk allocation.</p> <p>In our experience, the County will get the most value from the market sounding if the process is conducted primarily by the advisor directly with the interested operators and, as necessary, investors and developers in the one-on-one meetings. This allows us to preserve confidentiality and to anonymize the feedback provided. The benefit is greater willingness of the firms we meet to share their candid assessment, ideas, and recommendations. Arup has a hard-earned reputation in the market for guarding confidentiality. This has been earned not only through numerous public sector advisory engagements, but also through our many private sector engagements for project financings and infrastructure M&amp;A advisory.</p>
<b>Deliverable</b>	We will present the findings of the our analysis in a report to be shared with the County officials.



## Proposed Schedule

We propose bi-weekly meetings to review progress. The timeline assumed is contingent on receiving inputs and data from the County in a timely manner.





# Commercial Proposal

## Our Commercial Terms

### Fee basis and assumptions

#### Proposed Commercial Terms

1. We are pleased to provide the proposed scope of work on a time and materials basis, assuming the rates presented in Table 1. We have assumed a not-to-exceed cap of \$100,000 to complete the feasibility study.
2. We propose to invoice according to the following payment schedule.

**Mobilization Payment: \$25,000 upon notice-to-proceed;**

**Monthly invoices on time & materials basis.**

*Mobilization payment covers the first \$25,000 of time & materials.*

3. These fees take account of the indicative scope included in this proposal and assume that:
  - A draft report containing our initial findings would be developed after approximately 6 weeks of commencing work.
  - Our final report would be delivered 2 weeks later, reflecting our final comments and incorporating your feedback.
4. All reasonably incurred disbursements and expenses will be charged separately at cost for all phases of work.
5. Our engagement in this feasibility study is

on the basis that our organization will not be conflicted out of further procurement opportunities relating to Eastern Gateway concept project.

6. Our report will be prepared in English.
7. We explicitly do not permit circulation of and/or reliance upon any of our deliverables to/by retail investors and we will not accept any extension of responsibility and/or liability to retail investors and you agree to expressly indemnify Arup against any liability arising from such risk.
8. Our proposal is conditional on the acceptance of Arup's standard terms of engagement which will be provided separately. Please refer to the key terms and conditions in Appendix A.
9. Reimbursable expenses will be invoiced without mark-up.

#### Additional Assumptions

Our fee proposal is based on the following terms and assumptions:

- Our hourly billing rates are valid until March 31, 2021. Rates will then be escalated on a yearly basis by US CPI +2.5%.
- Arup will commence work upon a signed, executed engagement agreement and notice to proceed.
- Any additional services that may be

requested will be undertaken on a time and materials basis and is not included in the not-to-exceed cap.

- Our final reports and deliverables will be solely for your benefit.
- Any additional work beyond that as outlined in this scope and fee proposal, which has been agreed prior to being undertaken, will be charged at the rates in the table below.

Table 1: 2020 / 2021 Daily Rate

Transaction Specialists	US\$/hr
Project Director / Principal	\$530
Associate Principal	\$385
Senior Consultant	\$325
Technical Specialist	\$295
Consultant / Engineer	\$225
Administrative Support	\$130



## Our Select Experience



### Wichita Convention Center and Performing Arts Feasibility Study

#### City of Wichita

The City of Wichita was considering the remodeling or replacement of the convention and performing arts spaces currently located in the Century II facility. The City needed to examine all available funding and delivery methods such as P3 to harness the creativity and the capital of the private sector. Arup provided P3 business case services to help the City meet its needs. Arup conducted an evaluation of funding alternatives, including a P3 approach and other non-traditional delivery methods that could provide access to private capital through an appropriate procurement process. Arup recommendations to the Mayor and City Council included various options and strategies to fund and deliver the project, including potential access to private capital and non-traditional sources.



### Los Angeles Convention Center Delivery Options Analysis

#### City of Los Angeles

Arup was hired by the City of Los Angeles to evaluate at a strategic level alternative financing and delivery options for the new Convention Center. The Arup team identified an opportunity to recommend a Value-optimized Project through a significant mixed-use real estate development that could be integrated within the LACC campus, and was subsequently hired to conduct a detailed Business Case.

Scope of work included market analyses, delivery options analyses, identification of innovative revenue enhancement, fiscal impact analysis, EIR and procurement schedule development.



### Los Angeles Street Civic Building P3, California

#### City of Los Angeles

Arup supported the City of Los Angeles in the development, management, and implementation of the procurement strategy for their first development in a 15-year Civic Center Master Plan. The Los Angeles Street Civic Building is a \$700MM investment built to improve operational efficiency, revive the Civic Center core and minimize the city's administrative costs.

Arup's responsibilities included developing the commercial and financial structure, coordinating the development of the technical requirements and delivering contract and project management during the procurement process.



### Port Manatee P3

#### Manatee County Port Authority

Arup was the lead financial, commercial and technical advisor to the Manatee County Port Authority. Arup assessed the feasibility of the development and procurement of a long-term lease or P3 concession.

For the first phase of the project Arup determined whether the Authority should proceed with a concession model. The second phase included the development of an RFQ for selection of a concessionaire followed by contract negotiations. To determine the feasibility of future container and terminal expansion needs at the South Port, Arup completed a detailed review of the Port's existing business. Arup analyzed the Port's current demand and capacity and tested various scenarios. Arup also assessed the Port's current financial performance and capacity to raise new debt.

## Our Select Experience



### Resiliency Projects P3 Feasibility Study

#### Confidential

Arup was appointed as the lead financial advisor to a City Authority in connection with its resiliency projects. Arup conducted a P3 feasibility study to assess whether the authority's resiliency projects may be procured as a P3.

Arup created a bespoke financial model to assess the structure of the potential P3 as well as the annual availability payment the authority would pay the developer. Arup also conducted an analysis of the risks involved with the project and potential allocation of the identified project risks.



### Presidio Parkway P3– Doyle Drive Replacement Project

#### San Francisco County Transportation Authority

The project sponsor commissioned Arup to perform an analysis for alternate methods of delivery in the later parts of the contract. A series of financial modeling and risk analyses were done to assess the feasibility of delivering the later parts of the project via Public-Private Partnerships.

Arup was a significant contributor to procurement documents including the RFQ and RFP, concession agreement, technical specifications, and project funding agreements. Arup developed the bid evaluation criteria and played a central role assisting the State DOT with negotiations and selecting a preferred bidder.



### Structuring Milestone Payments

#### PPP Canada

Arup was appointed to deliver a study on the structuring of construction milestone payments for transport PPP projects. PPP Canada is a federal Crown corporation with a mandate to improve the delivery of public infrastructure.

The purpose of the study was to develop a consistent basis for the identification of milestones and the structuring of milestone payments. This involved detailed consideration of the financial, commercial and technical issues that underpin PPP projects, and understanding the effect that construction milestone payments have on risk transfer and Value for Money, to identify appropriate milestones and mitigation measures to manage potential risks arising.



### Long Beach Civic Center P3

#### City of Long Beach

Arup was appointed as the lead advisor to the City of Long Beach for the development of a new Civic Center. Arup led the project definition and required programming, RFP development, market engagement, and proposal evaluations.

Arup continued to advise the City in the exclusive negotiation period, during which Arup provided technical, commercial, and financial advice, as well as coordinating closely with legal advisors, to assist the City structuring the project and develop project agreements in concert with its private partner. The project reached financial close under Arup's advisory in April 2016.

## Our Select Experience Bridges



Goethals Bridge Replacement, New York,  
New Jersey

### Macquarie Infrastructure and Real Assets

Arup was the Lenders' Technical Advisor for the Goethals Bridge Replacement Project.

The Goethals Bridge Replacement Project included the design, construction, financing, and maintenance of the Goethals Bridge connecting Elizabeth, New Jersey, to Staten Island, New York. Works included the construction of a new 6-lane cable-stayed main span bridge, the demolition and removal of the existing bridge and the construction of new approach structures and realignments to link to the existing road network.

The Goethals Bridge Replacement Project is the first large P3 project in the New York area.



Champlain Bridge, Canada

### Public Works & Government Services Canada

Arup supported the grantor for the P3 procurement of a new bridge over the St Lawrence river in Montreal, Quebec, Canada. The project included the replacement of 8.5km of existing highway, including almost 4km of existing bridges, totaling \$3-5bn.

Arup was the engineering consultant that prepared the preliminary engineering and the technical requirements for the RFQ. Arup also developed the reference design for the RFP. Arup is currently the owner's engineer during the construction of the infrastructure.



Tappan Zee Bridge, New York

### New York State Department of Transportation

Arup acted as technical adviser to the owner for the replacement of the existing Tappan Zee Bridge with a new twin structure carrying 8 highway lanes, with future capacity for BRT and CRT.

Arup prepared design drawings, technical reports and estimates for the NEPA environmental review process and contract documentation to support the FHWA, NYSDOT and NYS Thruway Authority through the various stages of scheme development to design-build contract award and construction oversight.



## Our Select Experience Highways / Toll Lanes



### State Highway 288 (SH 288) Toll Lanes Project

**Cintra Infraestructuras S.A.**

Arup acted as Lenders' Technical Advisor. The project consists of adding four toll lanes over a 10.3 mile segment of the existing SH 288 between US 59, near downtown Houston, Texas, and the Harris County line, at Clear Creek, south of the city.



### Portsmouth Bypass P3 Project

**Cintra Infraestructuras Ferroviaria Agroman and Alan A Myers**

Arup acted as Lenders' Technical Advisor. The project comprises the design, construction, financing, operation, and maintenance of a four-lane, divided, limited-access highway comprised of 16 miles of new freeway around the City of Portsmouth in Scioto County, designated as State Route 823 (SR 823).



### I-4 Ultimate Project, Florida

**Infrared Capital Partners, Fluor Enterprises and Kiewit Infrastructure**

Technical Advisers to Lenders for financing. The project includes reconstruction and widening of the I-4 mainline and all associated improvements from west of Kirkman Road to East of SR 434 for a total project length of approximately 21 miles.

## Our Select Experience Highways / Toll Lanes



I-495 Capital Beltway HOT Lanes, Virginia

### VDOT and Capital Beltway Express

Arup served as the Independent Engineer for the first HOT Lanes project to be implemented in Virginia, as part of capacity improvements for the I-495 Capital Beltway.

Arup monitored all aspects of the construction of the project on behalf of VDOT, Concessionaire and the Lenders.



IDEAL Toll Road Portfolio, Mexico

### Canada Pension Plan Investment Board & Ontario Teachers' Pension Plan

Arup was commissioned by CPPIB and OTTP to provide technical and environmental due diligence services related to the acquisition of a stake in Impulsora del Desarrollo y el Empleo en América Latina (IDEAL). The portfolio included 13 toll road concessions spread across 1,700km, three logistics terminals, two wastewater treatment plans, as well as a toll collection service business and an operations business.

Arup's analysis focused on asset conditions, opex review and lifecycle capex review to support building up the deal's business case and advise on the adequacy of expenditure assumptions.



Indiana Toll Road Acquisition

### IFM Investors Pty

IFM Investors appointed Arup to perform Technical and Traffic and Revenue due diligence for the acquisition of Indiana Toll Road. The ITR is a 157 mile route linking the Chicago Skyway in the west and the Ohio Turnpike in the east.



## Our Select Experience Highways / Toll Lanes



Elizabeth River Crossings, Virginia

**Elizabeth River Crossings (joint venture of Macquarie & Skanska)**

Arup served as Technical and Traffic Advisor to the project's lenders through an independent due-diligence review of the facility's complex technical aspects, as well as traffic and revenue projections for the tolling plan.

Arup also developed a risk assessment which included PMLs during construction and operations.



I-95 HOV/ HOT Lanes Project, Virginia

**RBC Capital Markets**

Technical Adviser to Lenders for financing. The project involved the conversion of an existing HOV lane to a HOT lane and the addition of a second HOT lane.



American Roads Portfolio, Alabama & Michigan

**Oaktree Transportation Infrastructure Fund LP**

Arup was hired to provide technical due diligence services to support a potential acquisition of American Roads LLC. The portfolio included four toll bridges in Alabama and the Detroit-Windsor Tunnel which spans the Detroit River and houses a US-Canada border crossing.

The scope included a commercial review of the operator, a major maintenance review, and an operations and maintenance review.



Date	Client Entity ("Client")	Arup Entity ("Arup")	Owner Entity ("Owner")	Project Title ("Project")	Exhibits
<p><b>1. EXTENT OF AGREEMENT:</b> These terms and conditions are hereinafter referred to as the "Agreement" and supplement and govern all aspects of the obligations and liabilities between Arup and the Client relating to the Project. This Agreement and the Exhibits shall control and supersede all prior or simultaneous negotiations, representations and agreements, either written or oral including separate agreements between the Client and an Owner or other party if applicable. Should there be any conflict or discrepancy, this Agreement shall prevail. In the event that this Agreement is not fully executed, it shall nonetheless be effective and controlling to the parties so long as Arup has provided same to the Client and has begun work and not received written objections or modifications. Arup will not, and shall not be compelled to, commence work until a written notice to proceed is issued by the Client.</p> <p><b>2. ARUP'S RESPONSIBILITIES:</b> The Client appoints Arup and Arup agrees to perform the Professional Services identified in the Proposal pursuant to the terms and conditions set out in this Agreement. The term "Professional Services" and/or "Deliverable" shall mean the reports, opinions, letters and or the other deliverables prepared by Arup or its consultants in any medium, including graphic and pictorial representations, which relate to its professional services for the Project. Arup's Professional Services shall be in accordance with current, accepted professional practice appropriate for the size, complexity, schedule, and other characteristics of the Project in the jurisdiction where the project is located. ("Standard of Care"). Arup shall comply with all reasonable instructions of the Client and shall keep the Client fully informed on the progress and status of the Professional Services. Arup shall carry out the Services regularly and diligently and shall liaise and co-operate with any other consultants appointed by the Client.</p> <p><b>3. CLIENT'S RESPONSIBILITY:</b> The Client shall provide the following: (1) Full information identifying its requirements for and limitations on the Project. (2) A representative authorized to act on the Client's behalf with respect to the Project who shall render decisions in a timely manner pertaining to all requests and/or documents submitted by Arup (3) All legal, insurance, and accounting services including auditing services that Client determines necessary to address its needs and interests relating to the Project. (4) Prompt written notice to Arup if the Client becomes aware of any Arup fault or defect in the Deliverable. (5) If applicable the Client shall review and approve submission for each phase of the work in a timely manner and shall authorize Arup in writing to proceed with each succeeding phase. (6) Access to information, records and project as required for Arup to perform the Services. Client shall fully cooperate with Arup and provide reasonable assistance as required by Arup in relation to the performance of the Services.</p> <p><b>4. ADDITIONAL SERVICES:</b> Client requested services that are not expressly or implicitly identified in the Proposal as "Basic Services," shall be considered to be "Additional Services." Further, if Arup is delayed or disrupted in performing its services or its ability to meet any of its specific milestone dates is adversely affected in either case by the actions of the Client or others, or for reasons beyond Arup's reasonable control (including without limitation a Force Majeure Event), then: (1) Arup's liability for missing any milestone dates shall be reduced to the extent the delay is caused by the actions or failure to act of others or for reasons beyond Arup's control, (2) the time for performance of Arup's services shall be equitably adjusted, and (3) Arup shall be compensated for any additional resources employed as an Additional Service. If the Client requests that Arup perform Additional Services, both parties shall agree scope and fee for Additional Services. In the alternative, the Client shall provide Arup with additional compensation equal to Arup's hours expended at Arup's standard hourly rates, which is either attached to this agreement, part of the proposal or separately determined. Arup's hourly rates may be adjusted annually in accordance with Arup's standard practice. However, in no event shall Arup be compelled or required to perform what it deems to be an Additional Service unless the Client provides the appropriate written authorization.</p> <p><b>5. LIMITATIONS OF LIABILITY:</b> TO THE FULLEST EXTENT PERMITTED BY LAW, CLIENT, RECIPIENTS AND ARUP EACH WAIVE ANY RIGHT TO CONSEQUENTIAL, LIQUIDATED OR INCIDENTAL DAMAGES AND AGREE THAT THE TOTAL LIABILITY, IN THE AGGREGATE, OF ARUP AND ARUP'S OFFICERS, DIRECTORS, EMPLOYEES, AGENTS, AND INDEPENDENT PROFESSIONAL ASSOCIATES OR ENGINEERS, AND ANY OF THEM, TO THE CLIENT, AND ANY ONE CLAIMING BY, THROUGH OR UNDER THE CLIENT, FOR ANY AND ALL INJURIES, CLAIMS LOSSES, EXPENSES, OR DAMAGES WHATSOEVER ARISING OUT OF OR IN ANY WAY RELATED TO ARUP'S SERVICES, THE PROJECT INCLUDING INVESTMENT IN THE PROJECT OR THIS AGREEMENT, FROM ANY CAUSE OR CAUSES WHATSOEVER, INCLUDING BUT NOT LIMITED TO, THE NEGLIGENCE, ERRORS, OMISSIONS, STRICT LIABILITY, BREACH OF CONTRACT, MISREPRESENTATION, OR BREACH OF WARRANTY OF ARUP OR ARUP'S OFFICERS, DIRECTOR, EMPLOYEES, AGENTS OR INDEPENDENT PROFESSIONAL ASSOCIATES OR ENGINEERS, OR ANY OF THEM, SHALL NOT EXCEED THE TOTAL COMPENSATION RECEIVED BY ARUP FOR THE SPECIFIC WORK PERFORMED RESULTING IN CLIENT'S DAMAGES OR ONE HUNDRED THOUSAND DOLLARS, WHICHEVER IS GREATER. ARUP MAKES NO EXPRESS OR IMPLIED WARRANTY OR GUARANTY OF ANY SORT. SERVICES PROVIDED BY ARUP HEREIN ARE SOLELY FOR THE BENEFIT OF THE CLIENT AND ANY RECIPIENTS. NOTHING CONTAINED IN THIS AGREEMENT SHALL CREATE A CONTRACTUAL RELATIONSHIP WITH OR A CAUSE OF ACTION IN FAVOR OF A THIRD PARTY.</p> <p>ARUP'S LIABILITY UNDER OF IN CONNECTION WITH THIS AGREEMENT OR ANY RELIANCE SHALL EXPIRE ONE (1) YEAR FROM THE MOMENT OF COMPLETION OF THE SERVICES.</p> <p><b>6. INDEMNIFICATION:</b></p> <p><b>6.1. ARUP INDEMNIFICATION OF CLIENT:</b> Arup shall indemnify the Client and its officers, employees and successors from and against all damages, losses, and judgments, including reasonable attorney's fees and expenses to the extent they result from Arup's negligent acts or negligent omissions in the preparation of the Deliverables and for patent, copyright or trademark infringement attributable to Arup's services. Arup's liability arising from this indemnification and its liability for damages generally in connection with the Agreement shall be subject to the limitation of liability stated above. The Client acknowledges and agrees that Arup shall have no affirmative duty to provide a defense for the Client or any other party in connection with indemnified claims and that Arup's responsibility for reasonable legal fees of the indemnified parties shall be conditioned upon a finding against Arup of negligence by a court of competent jurisdiction and then only to the extent there is a clear nexus between the costs and the negligent act. The Client further agrees that, to the fullest extent permitted by law, no shareholder, officer, director, partner, principal, or employee of Arup shall have personal liability under this Indemnification provision, under any provision of the Agreement or for any matter in connection with the professional services provided in connection with the Project.</p> <p><b>6.2. CLIENT INDEMNIFICATION OF ARUP:</b> The Client assumes liability for and agrees to defend, indemnify and hold harmless Arup, its consultants, and their respective officers, directors, shareholders, partners, principals, employees, and successors from and against all damages, losses and judgments, including reasonable attorney's fees and expenses, to the extent they arise from or</p> <p>are alleged to arise from an act or omission of the Client, its agents, employees, consultants, contractors or construction manager (collectively for this indemnity "Client Entity"). Arup further agrees that, to the fullest extent permitted by law, no shareholder, officer, director, partner, principal, or employee of the Client shall have personal liability under this Indemnification provision, under any provision of the Agreement or for any matter in connection with the professional services provided in connection with the Project. To the fullest extent permitted by law, Client agrees to indemnify, defend and hold harmless Arup from any liability it incurs in excess of the agreed limitation of liability stated at Article 5.</p> <p><b>6.3. INSURANCE COVERAGES:</b> Arup shall maintain professional indemnity insurance and other insurance policies as described below. As and when they are reasonably required to do so by the Client, Arup shall produce for inspection documentary evidence that such insurance is being maintained. All deductibles and premiums associated with the coverages stated below shall be the responsibility of Arup. Arup shall upon request provide to the Client certificates of insurance evidencing compliance with the insurance requirements. Arup shall maintain the following minimum amounts of insurance during the term of this Agreement including the following: (1) Workmen's Compensation, Statutory; (2) Employer's Liability, <b>\$100,000</b>, General Liability, <b>\$500,000</b>, Automobile Liability, <b>\$500,000</b>, Professional Liability, <b>\$1,000,000</b>, Umbrella Liability, <b>\$2,000,000</b>.</p> <p><b>7. COPYRIGHT AND INTELLECTUAL PROPERTY:</b> Copyright and other intellectual property rights in all Deliverables, including but not limited to drawings, reports, calculations, specifications, software models and other documents prepared solely by Arup in connection with the Project remains vested in Arup. Any copyright and intellectual property rights created jointly for the purposes of the Project shall be owned jointly by the parties and may be used freely by each party for the purposes of the Project. Copyright and other intellectual property rights owned prior to this Agreement shall remain vested in the owner and shall not transfer to the other party. Client shall have a royalty free license to use the Deliverables for any purpose connected with or intended by the scope of the Project. Arup shall have a non-exclusive, irrevocable, royalty-free license to use any data or information supplied to it in connection with the Project (excluding personal data as defined under applicable data privacy legislation) for the purpose of improving its internal processes and project delivery. Where any data or information generated during the course of Arup's services is held within an externally-hosted data storage system, project extranet or similar hosted or controlled by the Client, the Client shall at any time up to 12 months from practical completion of the Project provide to Arup (or procure from a third party) access to all such data and information. The Client agrees to release, indemnify, defend, and hold Arup harmless from any and all liability resulting from unauthorized reuse of the Deliverables not in connection with the current subject matter of the Project.</p> <p><b>8. TERMINATION AND SUSPENSION:</b> Except as otherwise provided in this section, this Agreement may be terminated by either party upon not less than thirty (30) calendar days' written notice should the other party fail substantially to perform in accordance with the terms of this Agreement through no fault of the party initiating the termination. If the defaulting party fails to cure its default within the thirty (30) calendar day notice period or fails to commence action to cure its default when the cure cannot reasonably be completed within thirty (30) days, the termination shall take effect without further notice. For any other suspension of services by the Client, Arup shall be paid for all fees and expenses for services performed through the date of the suspension plus reasonable valid demobilization expenses. In the event of a suspension of services, Arup shall have no liability for any delay or damage caused because of such suspension of services. Upon the resumption of Arup's services, Arup's fee shall be equitably adjusted and Arup shall be reimbursed for all expenses incurred as a result of the suspension. If the Client's suspension of Arup's services continues for more than ninety (90) calendar days, Arup may terminate this Agreement upon fourteen (14) calendar days' written notice to the Client.</p> <p><b>9. PAYMENT PROVISION:</b> Payments are due and payable no later than thirty (30) days from the date of Arup's invoices. Invoices will be submitted monthly, and will be based on actual labor hours worked and reimbursable expenses incurred, based on the fee schedule presented in the Proposal. All monies secured by the Client by its client to pay for the Arup's services identified herein shall be deemed to be held in trust for Arup. In the event of a dispute pursuant to the services rendered hereunder, the Client shall not have the right to set off any payments due or owing to Arup. Payments due Arup and which remain unpaid shall bear interest 30 days from the date of the invoice at the rate of one and a half percent (1.5%) per month or the maximum amount permitted by law. Arup is entitled to recover any and all legal fees and any other costs expended if it becomes necessary to pursue legal actions to collect fees due hereunder. Client expressly acknowledges that Arup shall be entitled to a judgment for its attorney fees and court costs attributable to the collection of its fees which are ultimately adjudicated/arbitrated to be rightfully due and owing. Failure of the Client to make payments to Arup in accordance with this Agreement shall be considered substantial non-performance and grounds for Arup to terminate the Agreement. Reimbursable Expenses will be billed at cost plus 10%. Reimbursable Expenses include the actual expenses incurred directly or indirectly in connection with the Project such as those for travel (including transportation and associated expenses); toll telephone calls; reproduction of Project-related documents, reproduction of drawings; filing and permit fees; delivery, express and courier services; and film and processing. This fee is in addition to the budget. No back-up data for time or copies of bills or receipts for Reimbursable Expenses will be provided unless otherwise agreed. Should such back-up data be required, it can be provided for the necessary copying charges, plus an administrative fee of ten percent (10%) of the portion of the invoice requiring verification. This fee is in addition to the budget. The Client shall pay any goods or services tax in respect of the services and all invoices are stated exclusive of such taxes and net of any withholding tax. Client shall take special care to review the email and domain when it receives invoices to confirm that they are genuine and not a cyber attack, such as phishing, pharming, etc, failure of hardware, software, human error, etc and Client assumes all risk with no right of set-off or credit for an incident not the fault of Arup. To assist Client in fraud prevention, we have initiated a Digital Signature /Certificate to allow Client to ensure the emails they receive from us originate within the Arup network.</p> <p><b>10. NO SOLICITATION OF EMPLOYEES:</b> The Client agrees and acknowledges that it will not, directly or indirectly, solicit or hire or induce any employee of Arup to terminate his or her employment with Arup without the express written consent of the Arup. Recognizing that Arup has expended a substantial investment in recruitment, advertisement, testing, and training of their personnel, the Client agree that if it violates this clause and hires an employee of Arup within one year of the completion of the Project, it shall pay Arup for each employee thus hired, the amount of one year's salary, at the last level of annual remuneration that employee received from Arup.</p> <p><b>11. CONFIDENTIALITY / RELIANCE:</b> Arup shall be entitled to rely on the completeness and accuracy of services, information and documents furnished by or on behalf of Client. Arup shall not, save in the proper course of carrying out their obligations under this Agreement, disclose to any person or otherwise make use of any confidential information obtained in the course of the Agreement relating to the Client. If the Deliverable is a report, it is understood by the Client that it is intended for</p>					

and may be relied upon only by the Client. Any reliance by a third party ("Recipient") is subject to Arup's prior written consent at its sole discretion and subject to the third party execution of Arup's standard form reliance letter. Cost estimates generated or modified by Arup are to be an "Engineer's Estimate" and represent Arup's judgment as a design professional familiar with the construction industry. It is recognized, however, that Arup does not have control over the cost of labor, materials or equipment, over the Contractor's methods of determining bid prices, or over competitive bidding, market or negotiating conditions. Accordingly, Arup cannot and does not warrant or represent that bids or negotiated prices will not vary from any the Arup cost estimate or evaluation prepared or agreed to by Arup. Arup may supply written advice or confirm oral advice in writing or deliver a final written report or make an oral presentation on completion of the Services. Prior to completion of the Services Arup may supply oral, draft or interim advice or reports or presentations but in such circumstances Arup's written advice or Arup's final written report shall take precedence. No reliance shall be placed on any draft or interim advice or report or any draft or interim presentation. The following notice, or a notice in substantially form, may be affixed to any report or other document furnished by Arup: *"This document was prepared by Arup \_\_\_\_\_ ("Arup") for the benefit of \_\_\_\_\_ solely in its capacity as Technical Advisor pursuant to an Agreement dated \_\_\_\_\_. Arup (a) makes no warranty, expressed or implied, with respect to the use of any information or methods disclosed in this document; and (b) assumes no liability with respect to the use of any information or methods disclosed in this document. Any recipient of this document, by its acceptance or use of this document, releases Arup from any liability for direct, indirect, consequential, or special loss or damage whether arising in contract, warranty, express or implied, tort or otherwise."*

**12. DISPUTE RESOLUTION:** In recognition of the negative consequences associated with disputes both in terms of lost time and expense to all parties, the Client and Arup agree to settle their disputes by good-faith mediation as a condition precedent to the institution of legal proceedings by either party. If mediation would jeopardize the substantive rights of either party due to the application of any applicable statute of limitations, then mediation will be required during the dispute resolution process to the extent it may be used without jeopardizing the substantive rights of either party. The parties shall share the mediator's fee and any filing fees equally. The mediation shall be held in the United States of America, in the state of New York, unless another location is mutually agreed upon. In the event that the matter cannot be resolved through (or is not appropriate for) negotiation or mediation, the dispute shall be submitted for determination in the applicable courts of the state of New York and this Agreement shall be subject to and construed in accordance with the laws of that state. The Client shall not assert any claim against Arup more than one (1) year after the date of Arup's final invoice.

**13. NOTICES / MODIFICATION / NO WAIVER / FORCE MAJEURE:** Any and all notices or other communications required by this Agreement or by law to be served on, given to, or delivered to either party, shall be in writing and shall be deemed received upon receipt of telegraphic, facsimile or electronic notice. The Agreement may be amended only by written modification executed by both parties and may not be assigned without the written permission of the non-assigning party. The failure to put into effect, exercise or enforce any term, condition or provision of this Agreement shall not be deemed a waiver of such term, condition or provision or the party's right to enforce it. Should any part of this Agreement be rendered or declared illegal, legally invalid or unenforceable the remaining parts of this Agreement shall remain in full force and effect. The language shall not be construed for or against either party, regardless of who drafted it. This Agreement may be executed in one or more counterparts, each of which will be deemed an original and all of which taken together shall constitute one and the same document and a signature by facsimile or electronic mail may be used by any party to this Agreement as if it were an original signature. Each party shall execute and deliver all such further documents and instruments and take all such further actions as may be reasonably required or appropriate to carry out the intent and purposes of this Agreement. Neither the Client nor Arup shall be held accountable or penalized under the terms of this Agreement for the failure to perform which is occasioned by a Force Majeure Event, which shall mean an event or circumstance which is (1) beyond a Party's reasonable control, (2) the affected Party could not have reasonably avoided or overcome, and (3) which is not substantially attributable to the other Party. Force Majeure Events may include, without limitation, war, invasion, act of terror, strike (but not strikes or disputes unique to a Party), riot or other public disorder, intervening Act of God, natural disaster, hurricane force winds, tornadoes, disease outbreak, epidemic or pandemic, or other declaration of public health emergency, quarantine restriction.

For further information about this submission, please contact:

**Tim Treharne**  
Principal | New York

t: +1-212-897-1446

e: [Tim.Treharne@arup.com](mailto:Tim.Treharne@arup.com)

**Benton Erwin**  
Associate | New York

t: +1-212-897-1489

e: [Benton.Erwin@arup.com](mailto:Benton.Erwin@arup.com)

# Leavenworth County Request for Board Action

Date: November 11, 2020

To: Board of County Commissioners

Department Head Approval: *B. Noll*

**Additional Reviews as needed:**

Budget Review  Administrator Review  Legal Review

---

---

**Action Requested:** Consider the engagement of outside legal counsel provided by Ballard and Spahr for the Eastern Gateway Bridge Project.

**Analysis:** If the Leavenworth County Board of County Commissioners approves the completion of a feasibility study, the Public Works Department will need to secure outside counsel to decipher the feasibility study, preparing the initial plan and schedule of the parallel activities (NEPA, bi-state arrangements, KDOT/KTA process, inventory of procurement process, early risk discussions, related activities) could be done for an estimate not to exceed \$75,000. How much counsel is used will be determined by county staff and will be refined as we move through the process. Staff will try to minimize the legal assistance being received until the feasibility study is nearing completion and is entering review. Presuming things go well (i.e., positive results from the feasibility study, etc.). There's a lot of strategy at this point – positioning, sequencing, etc. Hourly billing rates for their services are \$535/hr.

**Alternatives:** Table, Deny, Approve

**Budgetary Impact:**

- Not Applicable
- Budgeted item with available funds
- Non-Budgeted item with available funds through prioritization
- Non-Budgeted item with additional funds requested

**Total Amount Required if Approved: \$75,000**

**Additional Attachments:**

# Leavenworth County Request for Board Action

Date: 12/2/2020

To: Board of County Commissioners

From: Public Works

Department Head Approval: *B. Noll*

**Additional Reviews as needed:**

Budget Review  Administrator Review  Legal Review

---

---

**Action Requested:** Consider the change order to the contract agreement for Add Alt. No. 2 for the stop light at the intersection of 20<sup>th</sup> and Eisenhower during the construction of the Eisenhower Road Sales Tax Project, with the previously accepted low bid contract with Kings Construction Co., Inc.

**Recommendation:** Consideration

**Analysis:**

Eisenhower Road Improvement Construction bids were presented to the BoCC on November 18, 2020. At that time, the Board of County Commissioners approved the contract with King's Construction for the base bid of \$5,883,421.55.

The Cities of Leavenworth and Lansing have not entered into an agreement with the County to include, in the contract, Bid Alternate 2, the installation of a traffic signal at the intersection of Eisenhower and 20<sup>th</sup> Street. The bid cost of this alternate is \$260,950.

**Alternatives:** Deny, Table

**Budgetary Impact:**

- Not Applicable
- Budgeted item with available funds (Sales Tax Fund)
- Non-Budgeted item with available funds through prioritization
- Non-Budgeted item with additional funds requested

**Total Amount Requested:** Not to Exceed \$260,950

**Additional Attachments:** Eisenhower Project Manual Contract Agreement

# Leavenworth County Request for Board Action

**Date:** December 2, 2020

**To:** Board of County Commissioners

**From:** Public Works

**Department Head Approval:** *B. Noll*

**Additional Reviews as needed:**

**Budget Review**  **Administrator Review**  **Legal Review**

---

---

**Action Requested:** Approval of the bid pricing for one new salt brine making unit for the Public Works Road and Bridge Department.

**Recommendation:** Approval

**Analysis:** This will be a new piece of equipment that the department does not currently have. This unit model is called Brine Extreme and is manufactured by Henderson Industries. This unit will replace the use of calcium chloride on paved roads during inclement weather. The cost of salt brine is approximately \$.10 cents per gallon versus calcium chloride cost at approximately \$1.00 per gallon. We currently purchase calcium chloride from an outside vendor and this purchase will allow us to make the salt brine in house and pre-treat the roadways to achieve better road conditions during inclement weather.

**Alternatives:** Table, Deny, Approve

**Budgetary Impact:**

- Not Applicable
- Budgeted item with available funds from Road and Bridge Dept.
- Non-Budgeted item with available funds through prioritization
- Non-Budgeted item with additional funds requested

**Total Amount Requested:** \$ 64,674.00

**Additional Attachments:** None





COUNTY OF LEAVENWORTH  
BRINE MAKER  
BID TABULATION - FINAL



Item Description	Unit	Quantity	American Equipment Co. Kansas City, KS		Sprayer Specialties Gardner, KS		C&H Outdoor LLC Park City, KS		Technology International Lake Mary, FL		Dultmeier Sales Omaha, NE	
			Bid Price	Total	Bid Price	Total	Bid Price	Total			Bid Price	Total
Brine Maker with optional holding tank	Each	1	\$84,992.00	\$84,992.00								
Brine Maker with optional holding tank <i>*Does not meet specifications.</i>	Each	1			\$54,663.60	\$54,663.60						
Brine Maker with optional holding tank <i>*With polytank</i>	Each	1					\$65,291.00	\$65,291.00				
Brine Maker with optional holding tank	Each	1							\$116,865.00	\$116,865.00		
Brine Maker with optional holding tank	Each	1									\$125,000.00	\$125,000.00
Leavenworth County Contractor (local preference, percentage difference from lowest bid)			<b>TOTAL</b>	<b>\$84,992.00</b>		<b>\$54,663.60</b>		<b>\$65,291.00</b>		<b>\$116,865.00</b>		<b>\$125,000.00</b>

**BID FORM**

Leavenworth county Public Works Is accepting sealed bids for the following equipment  
The bid form must be completed and included with the bids for the following equipment.  
Brine Maker with optional Holding tank

(Price to include all optional equipment, installation and training)

\$64,674<sup>00</sup> with Fiberglass TANK  
\$65,291<sup>00</sup> with Poly TANK

**NOTICE TO BIDDERS:**

- \*Leavenworth County reserves the right to reject any and all bids and waive any nonconformity in any submitted bid.
- \*Time of delivery must be specified.
- \*Unit will be a Turn-Key delivered to the Leavenworth County Shop.
- \*All warranties on equipment, will be handled by the equipment dealer

Sealed bids must be received by:

**Date: Thursday, November 12, 2020 at 10:00 a.m.**

Please submit all sealed bids to:
Leavenworth County Clerk
300 Walnut, Suite 106
Leavenworth, KS 66048

Company Name C+H Outdoor LLC dba Sno-Biz

Name (Printed): Darin W. Campbell

Full Address: 6024 N Broadway Park City KS 67219

Phone Number 316-202-2020 work 7 316-734-4419 cell

Email address: office@sno-biz.com

Date: 11/7/20

\*Delivery of equipment: Approx 6 weeks once order is placed.



**C&H Outdoor, LLC**  
6024 N. Broadway • Park City, KS 67219  
PO Box 4605 • Wichita, KS 67204

**Darin Campbell**

[316] 202-2020  
[316] 734-4419 cell  
office@sno-biz.com

SNOW/ICE MANAGEMENT EQUIPMENT  
SALES, SERVICE, SUPPORT -  
AUTHORIZED SNOW-EX, BUYERS,  
SNOWWOLF DEALER

BULK SALT - BRINE SALES, PLOWS,  
SPRAYERS, SPREADERS

HENDERSON BRINE MAKERS  
SNOW BROOMS - ICMELT

**WWW.SNO-BIZ.COM**

# Leavenworth County Brine Maker Bid Specification

## General Description:

Automated Brine making system for Leavenworth County Shop

## Construction Requirements:

Stainless Steel Hopper Tank constructed with a minimum of 10 guage steel

Stainless Steel Brine Tank constructed with a minimum of 12 guage steel

Integrated Ground fault protection

Unit will have the ability to sit outside in the elements all year around

On board storage overflow protection

Meets Specs

Yes No

Comments

## Capacity Requirements:

Minimum Brine Production rate of 5000 GPH

when adequate water supply is available

Brine pump out at 150 GPM with a 30' head

Meets Specs

Yes No

Comments

## Additional Equipment:

10,000 Gallon brine holding tank with fittings/plumbing included

Meets Specs

Yes No

Comments

## General information:

Price to include installation, training and warranty at Leavenworth County Shop

Brine system shall be ready to use once installation and training is completed.

Leavenworth County shall have specified water line and electricity in place for installation/training

*100 gpm pump that will produce  
6000 gpm with adequate water supply.*

*Fiberglass TANK \$15,700 delivered  
poly TANK \$16,344 delivered*

LEAVENWORTH COUNTY PROPOSAL

11-7-20

C&H OUTDOOR LLC dba SNO-BIZ

6024 N BROADWAY, PARK CITY, KS 67219

Darin W. Campbell [-office@sno-biz.com](mailto:-office@sno-biz.com)

316-734-4419 cell

316-202-2020 work

Description of Merchandise & Services:


1-Henderson Brine Xtreme Advantage with Pro Controls -6k gpm with adequate water supply.

2-10k DOT approved Fiberglass Storage Tank with estimated 25yr life span with proper maintenance.

3-10k DOT approved Poly Storage Tank with estimated 10yr life span.

4-Installation and training included in proposal. I am also doing 2 additional PMT (preventive maintenance & training) the following spring and fall of 2021. This helps insure safe and productive work environment for all involved in this operation.

5- Includes 1yr of cell service for me to be able to remote into the unit and help with any issues or concerns someone might have while making brine. It's an easy method to help customer that is having issues or that just needs some reassurance on how work the machine.

**SNO**  **-BIZ**



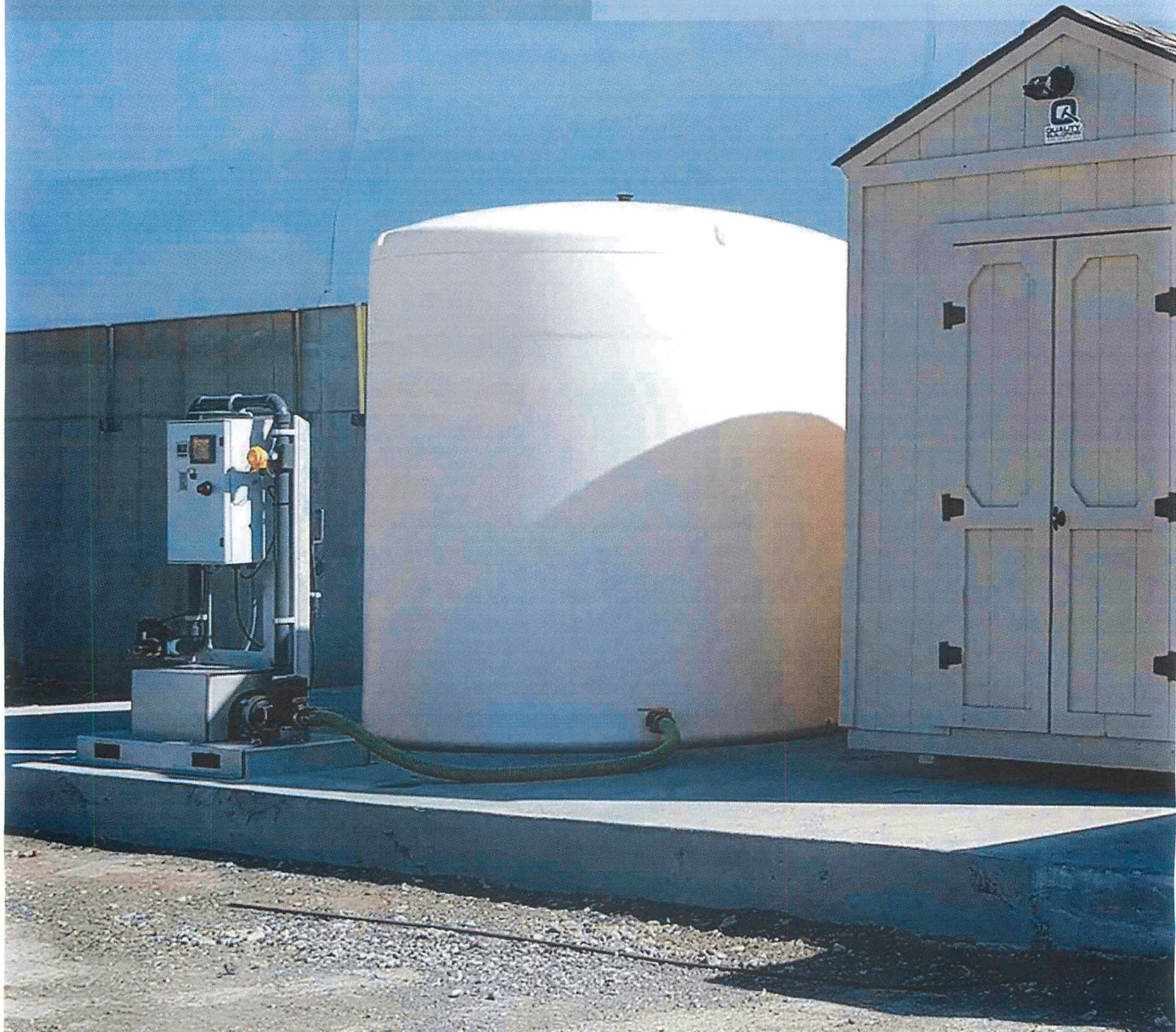


# BrineXtreme<sup>®</sup>

## ADVANTAGE<sup>™</sup>

*US Patent 13/656,412. Other patents pending.*

The BrineXtreme<sup>®</sup> Advantage<sup>™</sup> brings reliable, consistent brine production to the masses. Connect to power and water, fill the hopper with rock salt, start the system and you're making professional grade salt brine. This brine making workhorse features a 4.67 cu. yd. salt hopper, production rates up to 7,500 GPH, splash-free brine transfer, large, unobstructed cleanout openings and more. System flexibility is the cornerstone of the BrineXtreme<sup>®</sup> line. Match this brine maker to either Pro or Ultimate controls to meet your needs. Pro controls can be integrated or separated from the brine maker. Add Truck Fill Station for mixing/blending and truck or tank filling capabilities.





BRINE PRODUCTION  
**CONTINUOUS/AUTOMATED**

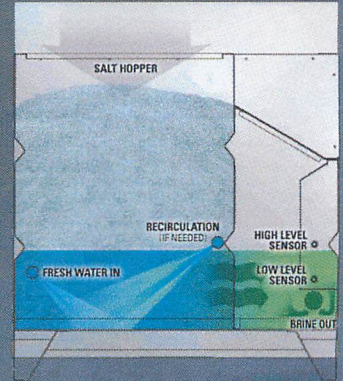
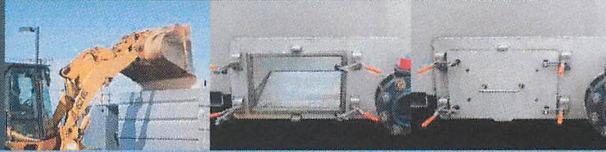
CLEANOUT  
**MANUAL** (SEE SPECS BELOW)

AVAILABLE CONTROLS  
**PRO OR ULTIMATE**

GALLONS/HOUR OUTPUT  
**UP TO 6,000 (PRO) / 7,500 (ULTIMATE)**

HOPPER WIDTH  
**11'**

HOPPER CAPACITY  
**4.67 CU. YD.**



Undissolved solids are removed through the large opening.

Cross-flow brine transfer for splash-free performance.



*Pro Controls can be attached or detached.*

OVERALL DIMENSIONS	165.19" x 54.25" x 63.03"
HOPPER FOOTPRINT	132.00" x 54.00"
HOPPER OPENING	128.27" x 32.39"
CLEAN OUT: SOLIDS	15.00" x 9.00" PANEL
CLEAN OUT: FINES	3.00" BUTTERFLY VALVE
CLEAN OUT: FLOOR	SLOPED



**Brine Xtreme**  
 ADVANTAGE

*Shown above with Truck Fill Station. Product design subject to change.*





# BRINEXTREME® SYSTEM SALINITY CONTROLS

## ULTIMATE CONTROLS

**CAPABILITIES**

**BRINE PLUS BLEND UP TO 3 ADDITIVES,  
3 MICRO INGREDIENTS & FILL  
3 TRUCKS SIMULTANEOUSLY**

**SALINITY CONTROL**

**AUTOMATED/23.3%**

**ACCURACY**

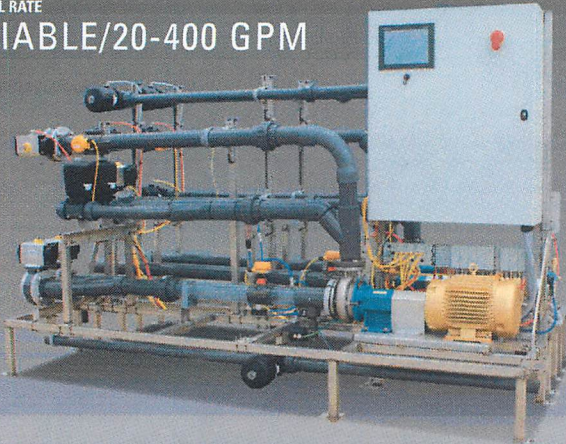
**+/- 0.01 SPECIFIC GRAVITY**

**OUTPUT**

**UP TO 7,500 GPH**

**TRUCK FILL RATE**

**VARIABLE/20-400 GPM**



**ULTIMATE CONTROLS**

## PRO CONTROLS

**CAPABILITIES**

**BASIC BRINE**

*Add Truck Fill Station to blend up to 3 products/fill trucks*

**SALINITY CONTROL**

**AUTOMATED/23.3%**

**ACCURACY**

**+/- 0.01 SPECIFIC GRAVITY**

**OUTPUT**

**UP TO 6,000 GPH**

**FLOW RATE**

**UP TO 100 GPM**



**PRO CONTROLS**

Handles All Salt  
(Treated/Untreated)

Yes

Yes

Motor Drive

Variable Speed

On / Off

Brine Measurement

Density

Density

Accuracy

+/- 0.01 SG

+/- 0.01 SG

Salinity Control

100% Automated

100% Automated

Brine Making Volume Measurement

Solid State Flow Meter

Open Loop

LED Touch Screen

10.4"

5.8"

Data Logging

Yes

Yes

Storage Tank Level Monitoring

Yes

Yes

Built-in Self Diagnostics

Yes

Yes

Cellular Remote Access

Included First Year  
Optional After 1 Year

Optional

Controls Cabinet Weatherproofing

NEMA 4X

NEMA 4X

UL Listed

Yes

Yes

Pump Design

Pedestal /  
Cast Stainless

Pedestal /  
Cast Stainless

Valves

Pneumatic Diaphragm

Electric Ball (24v DC)

Pump Motor

3.5, 5 & 7.5 HP

3 HP

Voltage/Phase

220v Single Phase or  
208/480/525 Three Phase

220v Single Phase

System Expandable

Yes

No